

Wood County COVID-19 Data

March 10, 2022

Key Takeaways

- The CDC has provided new guidelines to help communities decide what prevention steps to take based on local COVID cases and hospitalizations. Precautions are recommended for each level. Wood County is currently classified as Low, which means people may choose not to wear masks indoors in public.
- Cases have generally declined over the past several weeks and as of Thursday, March 10 dropped below 50 weekly cases per 100,000 people.
- From Dec. 2 – Feb. 10, 1 in 7 unvaccinated people 5 and older have had COVID, and nearly 1 in 5 unvaccinated people 65 and older have had COVID.

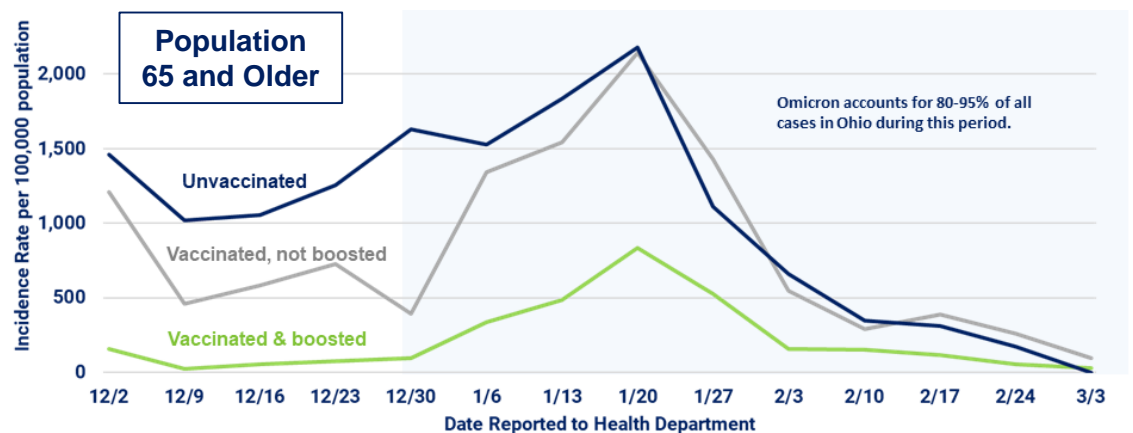
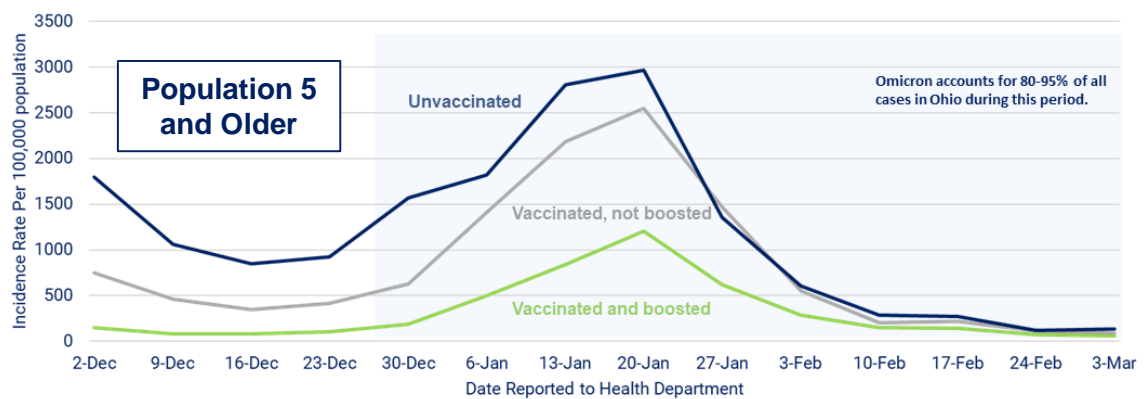
COVID Incidence Rates by Vaccine Status

Cases have declined among boosted, vaccinated and unvaccinated people since late January.

Throughout this period case rates have been lowest among those who are vaccinated and boosted.

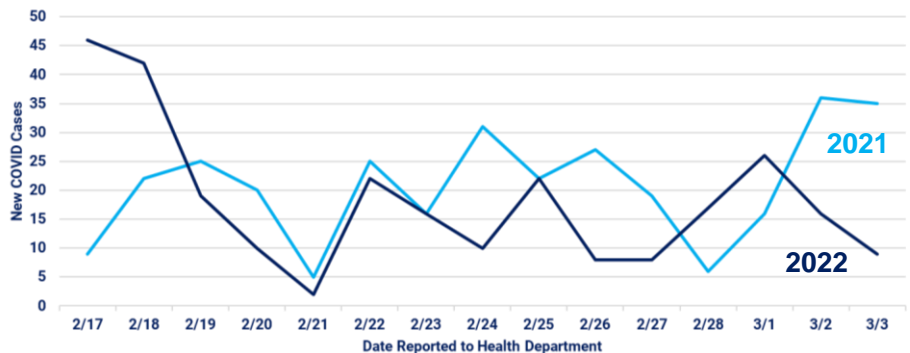
During this time:

- 1 in 7 people 5 and older who were not vaccinated had COVID.
- Nearly 1 in 5 people 65 and older who were not vaccinated had COVID.



Two-Week COVID Trend by Year

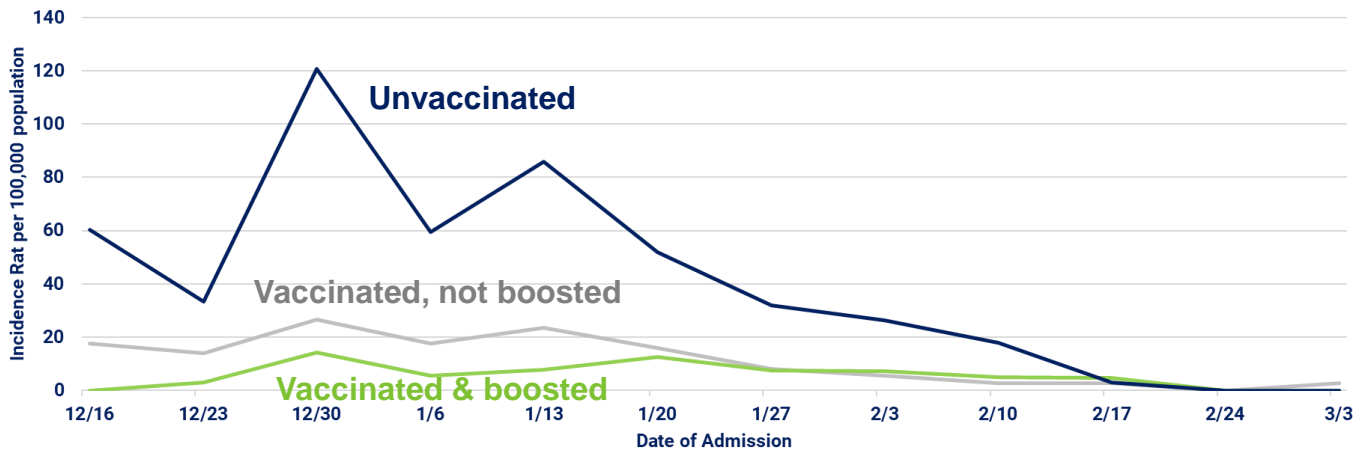
Cases over the two-week period from February 17 – March 3 were slightly lower overall than the same period in 2021.



COVID Hospitalizations and Deaths

COVID Hospitalization Incidence Rates - People 5+

- From December 16 – March 3, the COVID hospitalization rate was 37X lower in people who were vaccinated and boosted than people who were not vaccinated.
- As case rates have decreased in recent weeks, hospitalization rates have followed. One new hospitalization was reported between February 25 – March 3.



Newly-reported Hospitalizations

Reported to the Health Department Feb. 25 - March 3, 2022

Newly-reported deaths	1
Average age (years)	-
Age range	-

Newly-reported Deaths

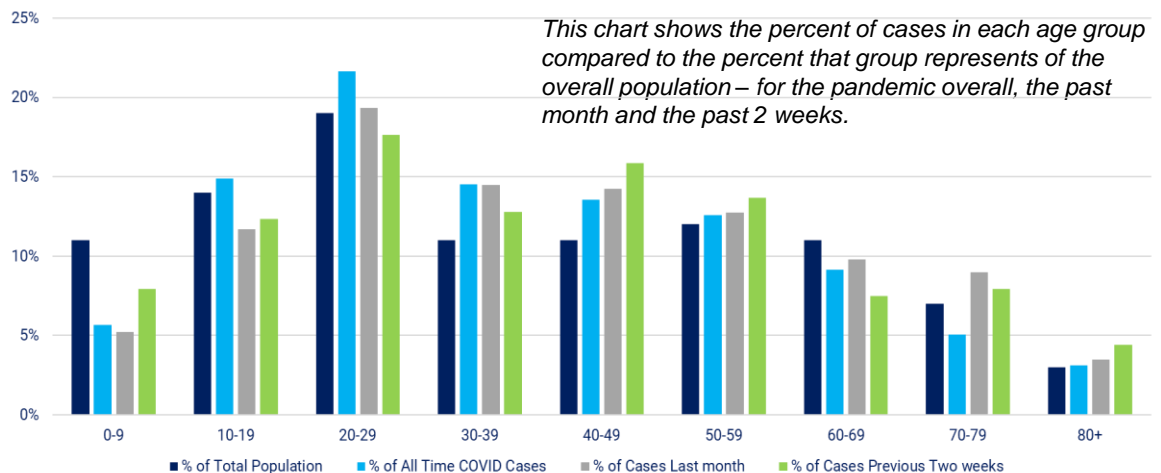
Reported to the Health Department Feb. 25 - March 3, 2022

Newly-reported deaths	3
Average age (years)	75
Age range	-

Deaths occurred between 1/1/22 – 2/13/22

Percentage of COVID Cases by Age Group

Over the past two weeks, children age 0-9 and adults 40-49, 50-59 and 80+ experienced rates of COVID that were higher than for the pandemic overall and higher than the past month.



This chart shows the percent of cases in each age group compared to the percent that group represents of the overall population – for the pandemic overall, the past month and the past 2 weeks.