

Wood County COVID-19 Data

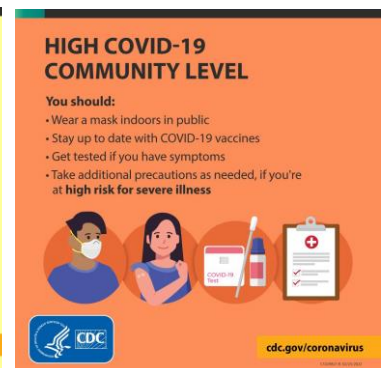
March 3, 2022

Key Takeaways

- The CDC has provided new guidelines to help communities decide what prevention steps to take based on local COVID cases and hospitalizations. Precautions are recommended for each level. Wood County is currently classified as MEDIUM, which means people may choose not to wear masks indoors in public.
- The Omicron surge peaked in late January. Cases have generally declined over the past several weeks.
- From Dec. 2 – Feb. 10, 1 in 10 unvaccinated people 5 and older have had COVID, and nearly 1 in 5 unvaccinated people 65 and older have had COVID.
- During 2020 and 2021, COVID was the fourth leading cause of death in Wood County, accounting for approximately 11% of all deaths.

CDC Issues Community-Based Guidelines for COVID Prevention

The CDC has provided new guidelines to help communities decide what prevention steps to take based on local COVID cases and hospitalizations. Precautions are recommended for each level.



Wood County is currently classified as MEDIUM.

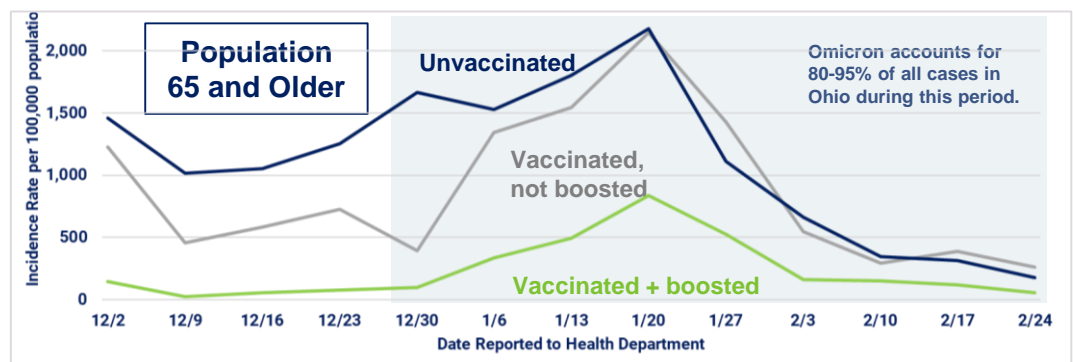
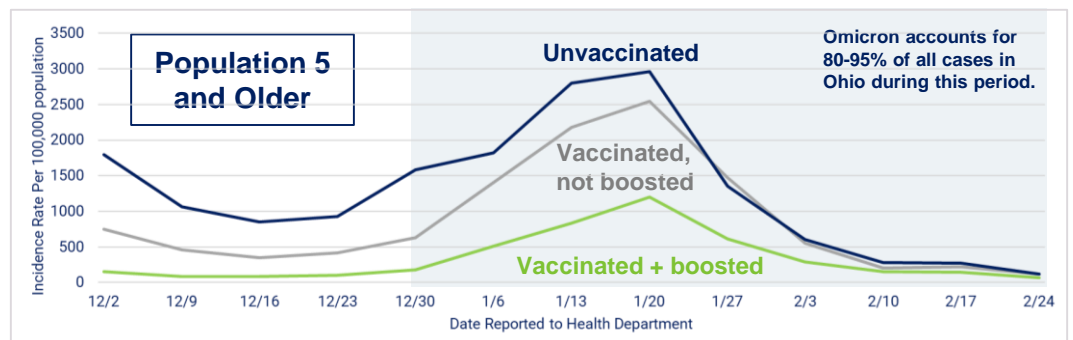
COVID Incidence Rates by Vaccine Status

Cases have declined among boosted, vaccinated and unvaccinated people since late January.

Throughout this period case rates have been lowest among those who are vaccinated and boosted.

During this time:

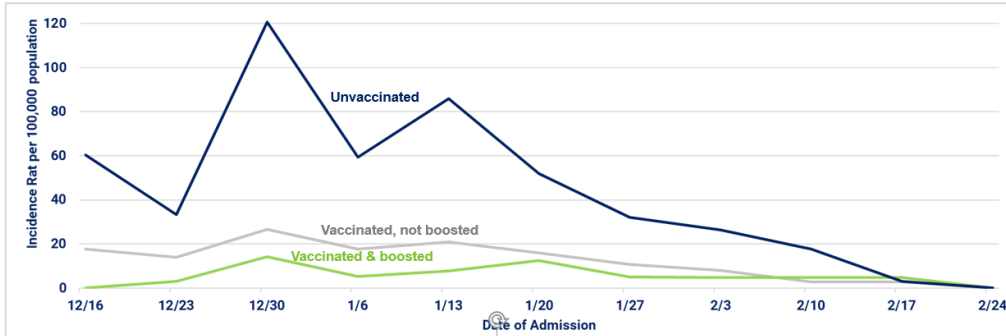
- 1 in 10 people 5 and older who were not vaccinated had COVID.
- Nearly 1 in 5 people 65 and older who were not vaccinated had COVID.



COVID Hospitalizations and Deaths

COVID Hospitalization Incidence Rates - People 5+

As case rates have decreased in recent weeks, hospitalization rates have followed. No new hospitalizations were reported between February 18 - 24.



Newly-reported Deaths

Reported to the Health Department Feb. 18– 24, 2022

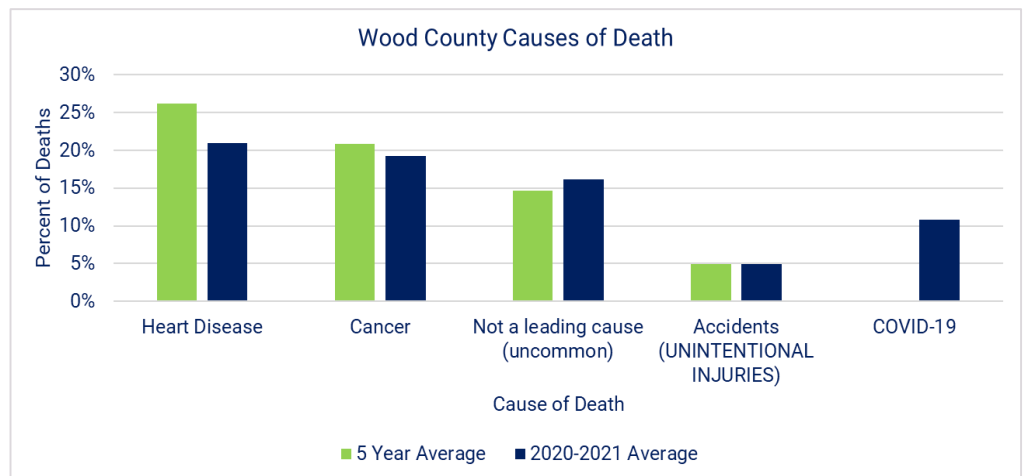
Newly-reported deaths	5
Average age (years)	75
Age range	57-96

Deaths occurred between 1/24/22 – 2/9/22

COVID Impact on Annual Death Rates: 2020-2021

During 2020 and 2021, COVID was the fourth leading cause of death in Wood County, accounting for approximately 11% of all deaths.

Death rates increased 13% in 2020 and 2021 over the average death rate in Wood County from 2015-2019. This increase in the overall mortality rate may be attributed to COVID.



Percentage of COVID Cases by Age Group

Over the past 2 weeks, the percent of total cases among people in older age groups (ages 40-79) were higher than for the pandemic overall. The percent of cases among children 0-9 years old and youth age 10-19 were lower than for the pandemic overall, and lower than the past month.

