

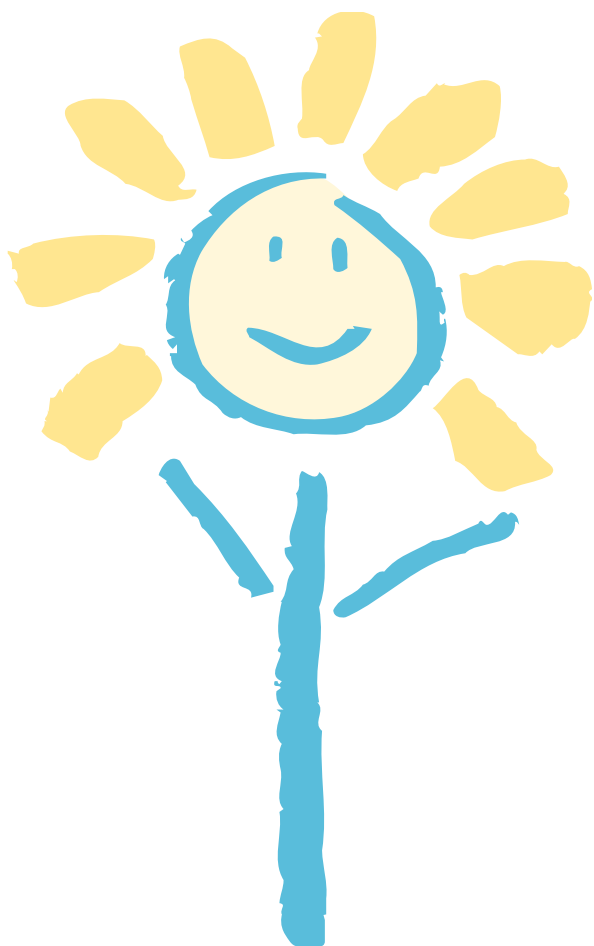


Services to
Young Children
and Families
in Wood County



Ohio Family and Children First Initiative

Help me grow™





MISSION

The mission of Help Me Grow is to:

- Carry out a county wide, comprehensive, coordinated, multi-disciplinary, interagency system for Wood County infants and toddlers with developmental delays or disabilities or at risk of developmental delays or disabilities and their families.
- Assure that services to families are based on needs and goals determined by parent/provider partnerships
- Coordinate existing systems for identification, referral, follow-up and transition of children from birth to three years, with or at risk for disabling conditions.

PURPOSE

Help Me Grow is a program for Ohio's expectant parents, newborns, infants, and toddlers that provides health and developmental services so that children start school healthy and ready to learn.

Services are designed with your family's concerns and goals in mind.

Help Me Grow is administered through the Ohio Department of Health as lead agency for Part C of the Individuals with Disabilities Education Act (IDEA) and directed at the local level by the Wood County Family and Children First Council.



PHILOSOPHY

Children with or at risk for delays or disabilities can benefit from early intervention programs which provide a comprehensive, coordinated and individualized combination of services to them and their families. These services should be available, accessible, affordable, acceptable and provided in the most natural setting possible.

The families of children with special needs have the right and responsibility to participate in planning their child's care and education. Parents of children with special needs may require training and support beyond that necessary for parents of children who are developing typically.

Effective utilization of community resources is necessary to provide the comprehensive services necessary to meet health, social and educational needs of these families. This is best achieved by the coordinated and cooperative effort of all community agencies providing services to these families.

TABLE OF CONTENTS

Local & Parochial Schools	4
Creative Arts Program	6
Other Recreational Programs.....	7



LOCAL SCHOOLS

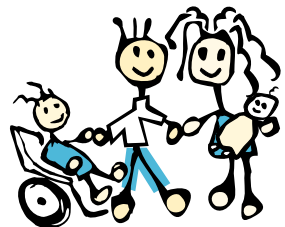
Anthony Wayne	419-877-5377
Fax.....	419-877-9352
Web	www.anthonywayneschools.org
Bowling Green Area Schools	419-352-3576
Fax.....	419-352-1701
Web	www.bgcs.k12.oh.us
Eastwood	419-833-6411
Fax.....	419-833-4915
Web	www.eastwood.k12.oh.us
Elmwood	419-655-2583
Fax.....	419-655-3995
Web	www.elmwood.k12.oh.us
Fostoria	419-436-4110
Fax.....	419-436-4118
Web	www.fostoriaschools.org
Gibsonburg.....	419-637-2479
Fax.....	419-637-3029
Web	www.gibsonburg.k12.oh.us
Lake	419-661-6690
Fax.....	419-661-6678
Web	www.lakelocal.k12.oh.us
Lakota	419-288-3053
Fax.....	419-288-3316
Web	www.lakota-sandusky.k12.oh.us
McComb	419-293-3979
Fax.....	419-293-2412
Web	www.noacsc.org/hancock/mb
North Baltimore	419-257-3531
Fax.....	419-257-2008
Web	www.northbaltimoreschools.org
Northwood	419-691-3888
Fax.....	419-697-2470
Web	www.northwood.k12.oh.us
Otsego	419-823-4381
Fax.....	419-823-3035
Web	www.otsegoknights.org
Patrick Henry.....	419-274-5451
Fax.....	419-274-1641
Web	www.patrickhenry.k12.oh.us

LOCAL SCHOOLS

Perrysburg	419-874-9131
Fax.....	419-872-8820
Web	www.perrysburgschools.net
Rossford	419-666-2010
Fax.....	419-661-2856
Web	www.rossford.k12.oh.us
Penta County Vocational	419-666-1120
Fax.....	419-661-6479
Web	www.pentacareercenter.org
Wood Lane.....	419-352-5115
Fax.....	419-352-9602
Web	www.woodmrdd.org
Wood County Educational Service Center.....	419-354-9010
Fax.....	419-354-1146
Web	www.wood.k12.oh.us

PAROCHIAL SCHOOLS

All Saints Elementary Rossford.....	419-661-2070
Fax	419-661-2077
Bowling Green Christian Academy Bowling Green.....	419-354-2422
Saint Aloysius Elementary & Jr. High Bowling Green.....	419-352-8614
Fax.....	419-352-4738
Saint Jerome Elementary Walbridge	419-666-2855
Fax.....	419-661-2285
Saint Louis Elementary Custar.....	419-669-2878
Fax.....	419-669-2878
Saint Rose Elementary Perrysburg.....	419-874-5631
Fax.....	419-874-1002



CREATIVE ARTS PROGRAM

Creative Arts Program • 1033 Moore Musical Arts Center
B.G.S.U. • Bowling Green, Ohio 43403

Contact Director

Contact Phone Number 419-372-8177

Fax Number 419-372-2938

Program Focus MUSIC
Exploring music
Guitar class
Preschool piano
Class piano level 1 & 2
Private instruction
Music classes
Private lessons

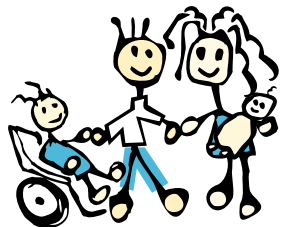
Eligibility 4 years of age through adult

Schedule Variable

Fees Variable

OTHER RECREATIONAL PROGRAMS

- BG Parks & Recreation 419-354-6223
- Rossford Recreation Center 419-666-2905
- Wood County Park District..... 800-321-1897
- YMCA Fort Meigs Center for Health Promotion
13415 Eckel Junction Rd.
Perrysburg, OH..... 419-251-9622
- Geary Family YMCA of Fostoria Ohio, Inc.
154 W. Center Street
Fostoria, OH 419-435-6608
- YMCA of Findlay Ohio
300 E. Lincoln Street
Findlay, OH..... 419-422-4424
- Eastern Community Branch YMCA
2960 Pickle Road
Oregon, OH 419-691-3523



NOTES

TABLE OF CONTENTS

Grand Rapids Public Library	10
Luckey Library	11
McComb Public Library.....	12
North Baltimore Public Library	13
Pemberville Library.....	14
Rossford Public Library	15
Stony Ridge Library	16
Walbridge Library	17
Way Public Library.....	18
Wayne Public Library	19
Weston Public Library	20
Wood County District Public Library	21
Online Resources	22-24



GRAND RAPIDS PUBLIC LIBRARY

Branch of the Weston Public Library
17620 Bridge Street, P.O. Box 245
Grand Rapids, Ohio 43522

Web Site

<http://library.norweld.lib.oh.us/weston>

Contact Phone Number

419-832-5231

Program Focus

Story Time for children ages 3 - 5
kindergarten Tuesdays @ 1:30 p.m.
Summer Reading Programs

Schedule

Monday 10:00 a.m. - 7:00 p.m.
Tuesday 12:00 a.m. - 7:00 p.m.
Wednesday 10:00 a.m. - 7:00 p.m.
Thursday 11:00 a.m. - 4:00 p.m.
Friday 11:00 a.m. - 4:00 p.m.
Closed Saturday and Sunday

LUCKEY LIBRARY

Branch of the Pemberville Public Library
228 Main Street • Luckey, Ohio 43443

Web Site

www.pembervillelibrary.org

Contact Phone Number

419-833-6040

Program Focus

Story Time
Summer Reading Program

Schedule

Monday through Thursday
3:30 p.m. - 7:30 p.m.
Saturday
10:00 a.m. - 12:00 p.m.



McCOMB PUBLIC LIBRARY

McComb Public Library
113 South Todd Street • McComb, Ohio 45858

Web Site www.mccombpl.org

Contact Phone Number 419-293-2425

Program Focus Sept. – Dec. Feb. – May
Story Hour – Tuesday
10:00 a.m. - 10:45 a.m.

Sept. – Dec. Feb. – April
Toddler Time – Thursday
10:30 a.m. - 11:00 a.m.

Schedule Monday through Wednesday
11:00 a.m. - 8:00 p.m.
Thursday and Friday
11:00 a.m. - 5:00 p.m.
Saturday
9:00 a.m. - 3:00 p.m.

Building Access Barrier free

Other Related Programs Read to Me Book Club in the Summer
Preschool Picnics

NORTH BALTIMORE PUBLIC LIBRARY

North Baltimore Public Library
230 North Main Street • North Baltimore, Ohio 45872

Web Site

<http://northbaltimore.oplin.org>

Contact Phone Number

419-257-3621

Program Focus

After School Story Surprise
Toddler Time
Summer Reading Program
Preschool Story Time
Evening Story Time

Schedule

Monday through Thursday
10:00 a.m. - 8:00 p.m.
Friday
10:00 a.m. - 6:00 p.m.
Saturday
10:00 a.m. - 2:00 p.m.
Sunday
Closed

After School Story Surprise:
Wednesday
2:45 p.m. - 3:30 p.m.
Toddler Time: Wednesday
10:30 a.m. - 11:00 a.m.
Preschool Story Time: Thursday
10:30 a.m. - 11:00 a.m.
Evening Story Time: Wednesday
6:30 p.m. - 7:00 p.m.

PEMBERVILLE LIBRARY

Pemberville Public Library
375 East Front Street • Pemberville, Ohio 43450

Web Site

www.pembervillelibrary.org

Contact Phone Number

419-287-4012
Fax: 419-287-4620

Program Focus

Story Hour
Special Holiday Reading
Preschool/Elementary Summer Reading
Lapsit Story Time

Schedule

Monday through Thursday
9:00 a.m. - 8:00 p.m.
Friday
9:00 a.m. - 5:00 p.m.
9:00 a.m. - 2:00 p.m. (Summer)
Saturday
10:00 a.m. - 3:00 p.m.

Story Hour (Sept. through Nov.)
Monday
6:30 p.m. - 7:00 p.m.
2 - 3 years & Caregivers
7:00 p.m. - 3-5 year olds
Thursday
7:00 p.m. - Lapsit
0 - 2 years & Caregivers

Other Related Programs

Puzzles, stuffed animals, Day Care Kits
(consisting of a bag of 15 books for
parents to read to their children)

Branch Locations

Luckey, OH
Stony Ridge, OH

ROSSFORD PUBLIC LIBRARY

720 Dixie Highway
Rossford, Ohio 43460

Web Site

www.rossfordlibrary.org

Contact Phone Number

419-666-0924

Program Focus

Tales for Tots – for 2 year olds
with adult
Flyers available for:
Story Times – 3 - 6 years of age
Summer Reading Club for all ages
Lapsit for Babies
*Contact Library for schedule
of programs*

Schedule

Monday through Thursday
9:00 a.m. - 8:00 p.m.
Friday and Saturday
9:00 a.m. - 5:00 p.m.
Sunday (September through May)
12:00 p.m. - 5:00 p.m.

Building Access

Handicapped accessible

Other Related Programs

Loan out books, videos,
CD Rom, books on tape, etc.
– free of charge

STONEY RIDGE LIBRARY

Branch of the Pemberville Public Library, P.O. Box 399
5805 Fremont Pike • Stony Ridge, Ohio 43463

Web Site

www.pembervillelibrary.org

Contact Phone Number

419-837-5948

Program Focus

Story Hour
Special Holiday Reading
Preschool Summer Reading

Monday and Tuesday
12:00 p.m. - 8:00 p.m.

Wednesday
9:00 p.m. - 5:00 p.m.

Thursday
12:00 p.m. - 5:00 p.m.

Saturday
10:00 a.m. - 12:00 p.m.

Story Hour
September through November
Tuesday at 7:00 p.m.

Other Related Programs

Puzzles, stuffed animals, Day Care Kits
(consisting of a bag of 15 books for parents to
read to their children)

WALBRIDGE LIBRARY

Branch of the Bowling Green Public Library
108 N. Main Street • Walbridge, Ohio 43465

Web Site

www.wcdpl.org

Contact Phone Number

419-666-9900

Program Focus

Summer Reading Programs
June - August
Preschool Story Time – Thursday
Mornings
11:30 a.m.

Schedule

Monday, Wednesday, Thursday
1:00 p.m. - 7:00 p.m.
Tuesday
11:00 p.m. - 7:00 p.m.
Saturday
11:00 a.m. - 3:00 p.m.

Other Related Programs

Special programs scheduled throughout the year. Please call for more information.



WAY PUBLIC LIBRARY

101 E. Indiana Avenue
Perrysburg, Ohio 43551

Web Site

www.waylibrary.info

Contact Phone Number

419-874-3135

Program Focus

To gain access to information through the use of the public library for the purpose of enrichment of daily lives for all age groups.

4 Separate Story Times
(6 mo.-6 yrs.)

Summer Reading Program

LEAP – Libraries Enabling All People -
Computers with Adaptive Equipment,
enlarges text, helps with mobility
issues, read aloud web pages

Perkins Panda – Interactive learning
tool for sight impaired pre-schoolers

Culture Club – Programs exploring
other cultures and countries

FLASH – Fun Library After School
Happenings (6 yrs. – 10 yrs.)

Active Young Adult Program
(11 yrs. – 14 yrs.)

Schedule

Monday through Thursday

9:00 a.m. - 8:30 p.m.

Friday and Saturday

9:00 a.m. - 5:30 p.m.

Sunday – closed seasonally

Open Sept. – May

1:00 p.m.- 5:00 p.m.

WAYNE PUBLIC LIBRARY

137 East Main Street
Wayne, Ohio 43466

Web Site

www.waynepubliclibrary.oplin.org

Contact Phone Number

419-288-2708

Program Focus

To promote reading and listening skills in young children. To instill the desire to read and learn using the public library as a tool.

Schedule

Monday

10:00 a.m. - 7:00 p.m.

Tuesday through Thursday

10:00 a.m. - 7:00 p.m.

Friday

10:00 a.m. - 2:00 p.m.

Saturday

10:00 a.m. - 2:00 p.m.

Preschool Story Time offered.

Contact library for more information.

Other Related Programs

Special story times

Summer reading program

AWE all literacy stations, Ages 2-8

WESTON PUBLIC LIBRARY

13153 Main Street • P.O. Box 345
Weston, Ohio 43569

Web Site

<http://library.norweld.lib.oh.us/weston>

Contact Phone Number

419-669-3415

Program Focus

Story Time for children
ages 3 - Kindergarten
on Wednesdays
at 1:30 p.m.
Summer reading programs

Schedule

Monday, Tuesday, Wednesday
10:00 a.m. - 8:00 p.m.
Thursday, Friday
10:00 a.m. - 5:00 p.m.
Saturday
10:00 a.m. - 3:00 p.m.

Building Access

Handicapped accessible



WOOD COUNTY DISTRICT PUBLIC LIBRARY

251 North Main Street
Bowling Green, Ohio 43402

Web Site

www.wcdpl.lib.oh.us

Contact Phone Number

419-352-5104

Program Focus

Assistance for children, parents, teachers, students and caregivers in choosing appropriate materials.
 Infant Story Time (6 mo. – 18 mo.)
 Toddler Story Time (2 years)
 Preschool Story Time (3 - 5 years)
 Family programming
 Regular programs for various ages
 Red Cross Babysitting Course (several times yearly)
 Circulating Child Care Kits for home daycare providers
 Concentrating on skills to improve reading and writing for families

Schedule

Monday through Thursday
 9:00 a.m. - 8:30 p.m.
 Friday
 9:00 a.m. - 6:00 p.m.
 Saturday
 9:00 a.m. - 5:00 p.m.
 Sunday
 1:00 p.m. - 5:00 p.m.

Building Access

Barrier free

Other Related Programs

Scheduled Bookmobile stops throughout the county

ONLINE RESOURCES

The Ohio Department of Developmental Disabilities

A state agency that oversees a variety of services for individuals with mental retardation and developmental disabilities. These services are provided from infancy through adulthood.

Web Site <http://oddd.state.oh.us>

Family Child Learning Center

A statewide web site with info on the Family Child Learning Center, The Family Information Network and statewide Help Me Grow workshops.

Web Site www.familychild.org

Ohio Coalition for the Education of Children With Disabilities (OCECD)

Provides information, training, and advocacy assistance to parents of children with disabilities throughout the state.

Web Site <http://www.ocecd.org>

Ohio Department of Health Help Me Grow (HMG) is a free program available to expectant parents and families with children under the age of three. Help Me Grow staff will assist you in finding and accessing services for medical, educational, social, emotional or financial needs.

Web Site www.ohiohelpmegrow.org

ONLINE RESOURCES

State Support Team 1

Provides services and resources to parents and professionals to assist with the education of children who have disabilities. Multiple centers throughout the state.

Web Site www.sstr1.org

Northwest Ohio Family Connections Northwest Ohio Family Connections is a collaborative child abuse prevention and family support project that serves the 17 counties of Northwest Ohio.

Web Site [www.nwofamilyconnections.org/
serviceprovidermaintmain.as/](http://www.nwofamilyconnections.org/serviceprovidermaintmain.as/)

Exceptional Parent – A resource for toys, health care, technology and library directories.

Web Site www.eparent.com

NICHCY (National Information Center for Children & Youth with Disabilities)

NICHCY is the national information and referral center that provides information on disabilities and disability-related issues for families, educators and other professionals.

Web Site www.nichcy.org

Zero to Three A network of people around the country who are concerned about the needs of infants, toddlers and families.

Web Site www.zerotothree.org

WebMD Provides medical information and services for consumers, physicians and other providers.

Web Site www.webmd.com

ONLINE RESOURCES

National Center for Learning Disabilities

Provides online resources for parents, educators, and individuals with learning disabilities

Web Site www.nclld.org

National Organization for Mothers of Twins Club

Provides information and resources for parents of twins. This website also offers links to local twin clubs.

Web Site <http://www.nomotc.org>

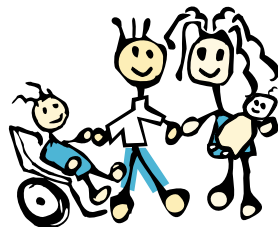


TABLE OF CONTENTS

Bowling Green Christian Food Pantry 26

Bowling Green Salvation Army Social Services..... 27

Community Food Pantry 28

Deacon’s Shop..... 29

Food Pantry – God’s Storehouse 30

Goodwill of Bowling Green 31

HEAP (Home Energy Assistance Program) 32

The Luckey Food Pantry 33

Mainstreet Church Food Pantry 34

Martha’s Kitchen..... 35

Otsego Food Pantry..... 36

Perrysburg Christians United Food Pantry..... 37

Salvation Army North Baltimore 38

St. Aloysius / St. Vincent DePaul Society 39

St. Vincent DePaul..... 40

WSOS Family Services Programs..... 41

Notes 42



BOWLING GREEN CHRISTIAN FOOD PANTRY

St. John's Episcopal Church • 1505 E. Wooster Street
Bowling Green, Ohio 43402

541 W. Wooster Street
Bowling Green, Ohio 43402

Contact Director

Contact Phone Number 419-353-5174

Program Focus Emergency food assistance

Eligibility People experiencing food emergency:
Clients need referral from local
pastor or social service agency
Once every 3 months

Schedule 541 W. Wooster Street
Monday, Wednesday, Friday
1:00 p.m. - 3:00 p.m.

St. John's Episcopal Church
Thursdays
6:00 p.m. - 8:00 p.m.
Saturdays
1:00 p.m. - 3:00 p.m.

BOWLING GREEN SALVATION ARMY SOCIAL SERVICES

1045 North Main Street, Ste. 8
Bowling Green, Ohio 43402

Contact

Robert Barr

Contact Phone Number

419-352-5918

Program Focus

Assist with utilities, prescription assistance, temporary housing and gas for medical appointments.

Eligibility

Low income

Schedule

Monday, Tuesday, Thursday and Friday

9:00 a.m. – 12:00 p.m.

1:00 p.m. – 4:00 p.m.

Closed Wednesday morning, open Wednesday afternoon:

1:00 p.m. – 4:00 p.m.

(If hours change, check door)

Fees

None

Building Access

Barrier Free

COMMUNITY FOOD PANTRY

Bethlehem Lutheran Church • P.O. Box 344
220 Cedar Street • Pemberville, Ohio 43450

Contact Church Secretary:
Kathy Barandt

Contact Phone Number 419-287-4182

Program Focus Non-perishable food items available

Eligibility Eastwood School District residents

Schedule Monday through Thursday
11:00 a.m. - 2:00 p.m.



DEACON'S SHOP

First Presbyterian Church
126 South Church Street • Bowling Green, Ohio 43402

Contact Director

Contact Phone Number 419-352-5176

Program Focus Free used clothing available to anyone
Also have some small household items
(Household Items are only available when/if
donations come in.)

Eligibility Anyone

Schedule Thursdays
9:30 a.m. - 11:00 a.m.

Fees None

FOOD PANTRY – GOD’S STOREHOUSE

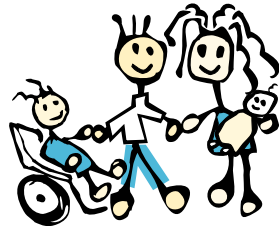
St. James Lutheran Church
451 Caldwell Street • Caldwell and Timmons Road •
Bradner, Ohio 43406-9753

Contact Dee Wiker

Contact Phone Number 419-288-3606

Program Focus For families in need
Lakota School District
Wayne, Bradner, and West Millgrove area

Schedule Call for appointment
Sponsored by local churches



GOODWILL OF BOWLING GREEN

1058 N. Main Street
Bowling Green, Ohio 43402

Contact Manager

Contact Phone Number 419-354-9726

Fax Number 419-353-1341

Program Focus Monies from purchases go to training individuals with barriers to employment.

Schedule Monday through Saturday
10:00 a.m. - 9:00 p.m.
Sunday
12:00 p.m. - 5:00 p.m.

Fees None

Building Access Barrier Free

HEAP (HOME ENERGY ASSISTANCE PROGRAM)

WSOS (HEAP) • Jordan Family Development Center
812 N. College Drive • Bowling Green, Ohio 43402

Contact Phone Number 419-353-7407

Fax Number 419-353-1100

Program Focus Federally-funded program designed to help low-income households which are threatened with utility shut-offs, are already disconnected or have a 10-day or less supply of bulk fuel
One time assistance per winter season

Eligibility Call for eligibility

Schedule November 1 – March 31
Monday through Friday
9:00 a.m. - 5:00 p.m.
HEAP and PITT
9:00 a.m. - 3:45 p.m.
Call to schedule appointment

Building Access Handicap accessible

Other Related Programs HEAP/Summer Cooling (July and August)
Offers free air conditioners based on medical conditions and income

PIPP- percentage income payment plan
June – Winter

THE LUCKEY FOOD PANTRY

P.O. Box 54
Luckey, Ohio 43443

Contact Karen Snyder

Contact Phone Number 419-833-3231

Program Focus Emergency assistance with food on call

Eligibility Eastwood School District

Schedule Last Wednesday & Thursday of the month

Wednesday

1:00 p.m. - 3:00 p.m.

Thursday

6:00 p.m. - 8:00 p.m.

MAINSTREET CHURCH FOOD PANTRY/ UNITED BRETHREN IN CHRIST

705 North Main Street
Walbridge, Ohio 43465

Contact

Terry Smith
terry.smith@mainstreetlife.org

Contact Phone Number

419-666-3020

Program Focus

People in need of food

Eligibility

Lake Township residents

Schedule

By appointment - Monday through Friday



MARTHA'S KITCHEN

United Methodist Church
1526 East Wooster • Bowling Green, Ohio 43402

Contact

Maxine Miller

Contact Phone Number

Fellowship: 419-353-0682
Home: 419-352-6700

Program Focus

Hot dinner meal – every Friday night
Serving from 4:30 p.m. - 6:00 p.m.

Eligibility

Everyone is welcome

Schedule

Every Friday
4:30 p.m. - 6:00 p.m.

Fees

None

Other Related Programs

Groceries and clothing are available for people and families in need occasionally. This is a small pantry.

OTSEGO FOOD PANTRY

1st Presbyterian Church • 17700 Beaver Street
Grand Rapids, Ohio 43522

Contact Director

Contact Phone Number 419-832-4214

Program Focus Short term assistance with food

Eligibility Otsego School District

Schedule By appointment only



PERRYSBURG CHRISTIANS UNITED FOOD PANTRY

Behind Grace United Methodist Church
601 E. Boundary St. • Perrysburg, Ohio 43551

Contact

Chair Person:
Shirley Kleist

Contact Phone Number

419-874-7561

Program Focus

People in need of food
11 churches in town and surrounding
community contribute to this food pantry

Eligibility

Wood County residents
Anyone in need of food north of
Route 582
Bring 2 forms of I.D. with current address

Schedule

Monday 1:00 p.m. - 3:00 p.m.
Friday 9:00 a.m. - 11:00 a.m.

SALVATION ARMY NORTH BALTIMORE

123 E. Broadway • Rear Entrance
North Baltimore, Ohio 45872

Contact Director

Contact Phone Number 419-257-2334 (Service/Intake)

Fax Number 419-257-1005

Program Focus Utility assistance, prescription assistance, food assistance. Other assistance is available case by case.

Schedule Every Tuesday & Thursday
10:00 a.m. – 4:00 p.m.
or by appointment

ST. ALOYSIUS / ST. VINCENT DE PAUL SOCIETY FOOD PANTRY

150 South Enterprise
Bowling Green, Ohio 43402

Contact Jo Tutolo

Contact Phone Number 419-352-4195

Program Focus People in need of food

Eligibility Wood County residents

Schedule Monday – Friday
10:00 a.m. - 12:00 p.m.
1:00 p.m. - 3:00 p.m.



ST. VINCENT DE PAUL

St. Vincent DePaul Thrift Store
110 South Main Street • North Baltimore, Ohio 45872

Contact

Margaret McGrain

Contact Phone Number

419-257-2454

If Margaret can not be reached, call the Police Station at 419-257-3969 or the Salvation Army in North Baltimore on Tarr Street.

Program Focus

Help with utilities, rent, Rx and lodging

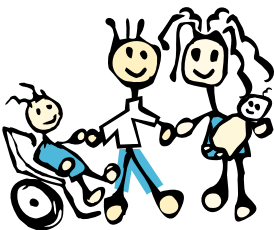
Eligibility

Cygnets, Jerry City, Bairdstown, Hoytville, Custar, Hammansburg and North Baltimore residents

Schedule

Wednesday, Thursday, Friday
10:00 a.m. - 5:00 p.m.

Note: On some of the days that St. Vincent De Paul is closed, the Salvation Army in town is open. The Salvation Army is open Tuesday and Thursday.



WSOS FAMILY SERVICES PROGRAMS

Jordan Family Development Center • 812 N. College
Bowling Green, Ohio 43402

Contact Supervisor (Cheryl Trumbull)

Contact Phone Number 419-353-7407

Program Focus Job Opportunities for Low-Income Individuals,
Transitional Housing Program, Homeless
Prevention Program

Eligibility Homeless and Low-Income Individuals
and Families

Schedule Monday through Friday
8:00 a.m. - 5:00 p.m.

Other Related Programs Head Start

NOTES

TABLE OF CONTENTS

All About The Kids Learning Center 46

Bethlehem Lutheran Preschool 47

B.G. City Schools Special Needs Preschool..... 48

Bowling Green Christian Academy 49

Bowling Green State University 50

Bright Beginnings Preschool 51

Children’s Discovery Center 52

Corrine’s Creative Day Care..... 53

Discovery Kingdom..... 54

Dunn’s Kiddie Kare 55

First United Methodist Preschool..... 56

Fort Meigs YMCA Adventure Center..... 57

Fostoria Early Childhood Center 58

F.U.M. Child Learning Center 59

Grace Preschool..... 60

Jack and Jill Child Care, Inc. – Bowling Green 61

Jordan Family Development Center 62

Kid’s World Preschool of Perrysburg, Inc. 63

Kinder Care Learning Center 64

Little Wonders..... 65

Montessori School of Bowling Green 66

NB Discovery Academy, LLC 67

Owens Community College Child Care Center..... 68

Penta County Preschool 69

Plan, Do, & Talk Preschool and Primary School..... 70

Rainbow Cooperative Nursery School..... 71

Rossford Special Needs Preschool 72

St. John’s Hilltop Preschool 73

St. Paul Preschool 74

St. Rose Parish Preschool 75

TABLE OF CONTENTS

Tender Age Daycare Center.....	76
The Gathering Place	77
The Nurturing Nook Infant and Toddler Care.....	78
The Prescribed Pediatric Center.....	79
Toddlers School	80
Village Early Childhood Center	81
Westside Montessori Center.....	82
Willow Early Childhood Center	83
Wonderland of Learning.....	84
Wood County Special Needs Preschool Program.....	85
Wood Lane Early Intervention	87
Wood Lane School	88
WSOS Child Development Program.....	89
WSOS Child Development Program Locations.....	90
YW Child Care Resource and Referral	91



**To report a concern about a licensed child care center,
or to receive compliance information,
call Ohio Department of Human Services at
419-245-2830**

ABOUT NURSERY SCHOOLS, PRESCHOOLS AND DAY CARE CENTERS...

There are four general kinds of programs for children:

Child Care Centers are usually for children two to six years of age, although some centers enroll infants and/or toddlers. Most child care centers operate twelve hours a day, year round.

Nursery Schools are usually for children three to five years of age and operate half-day during the school year. The number of days per week varies.

Parent-Owned, Cooperative Schools are owned, sponsored, planned, and taught by the parents of the children attending, usually with a qualified director/teacher in charge. Ages vary from infancy through five years.

Babysitters and In-Home Care Programs are often used for infants and toddlers. Individuals care for children in their homes. Ages of children vary.

In addition, many public and private schools offer services for children under five years of age as part of their regular program. These may or may not be licensed by the State of Ohio.

Licensing by the State of Ohio Department of Job and Family Services is required for all child care centers, nursery schools, family home care programs with five or more children enrolled and parent-owned cooperative nursery schools.

The following information will help you evaluate the needs of your child and what is the most appropriate care arrangement based on your own requirements.

ALL ABOUT THE KIDS LEARNING CENTER

520 Ordway Avenue
Bowling Green, Ohio 43402

Contact Director

Web Site www.allaboutthekids.us

Contact Phone Number 419-353-3898

Program Focus Provide child care for infants 6 weeks of age through school-aged children in 6th grade (12 years of age)

Schedule Monday through Friday
6:30 a.m. - 5:30 p.m.

Fees Call for rates

BETHLEHEM LUTHERAN PRESCHOOL

220 Cedar Street • P.O. Box 344
Pemberville, Ohio 43450

Contact	Director
Web Site	www.bethlehempemberville.org
Contact Phone Number	419-287-4182
Fax Number	419-287-3331
Program Focus	Christian preschool
Eligibility	3-5 years of age on or before August 1
Schedule	<p>3 years old: Tuesday and Thursday 9:00 a.m. - 11:30 a.m. 12:00 p.m. - 2:30 p.m.</p> <p>4-5 years old: Monday, Wednesday and Friday 9:00 a.m. - 11:30 a.m. 12:00 p.m. - 2:30 p.m.</p> <p>Preschool – Elementary Age before and after school child care</p>
Fees	Call for information
Transportation	None
Building Access	Barrier free

B.G. CITY SCHOOLS SPECIAL NEEDS PRESCHOOL

812 N. College Drive
Bowling Green, Ohio 43402

Contact	Early Childhood School Psychologist
Web Site	www.bgcs.k12.oh.us
Contact Phone Number	419-352-3576 Fax: 419-352-3836
Program Focus	Preschool experiences within an early childhood setting for children who have special needs. A limited number of typically developing children participate as peer role models. Children with special needs are served within the framework of an Individual Education Program (IEP). Appropriate support services are provided by speech, PT, and OT specialists.
Eligibility	3 – 5 years of age, residing in the Bowling Green City School District, experiencing significant delays in any of the following areas of development: communication, social-emotional, hearing, vision, or motor skills. Meet eligibility guidelines according to Ohio's Rules for Preschool Children with Disabilities. Typically developing children are also included.
Schedule	Monday through Thursday Morning or afternoon sessions
Fees	No charge for children eligible for special needs programming; a fee is charged for typically developing children; call for information
Transportation	Provided for children with special needs
Building Access	Barrier free
Other Related Programs	Itinerant/home based services

BOWLING GREEN CHRISTIAN ACADEMY

1165 Haskins Road
Bowling Green, Ohio 43402

Contact Director/Teacher

Web Site www.bgchristian.org

Contact Phone Number 419-354-2422

Fax Number 419-354-0232

Contact Email kslates@bgchristian.org

Program Focus A Christian preschool. Academics utilizing the Abeka curriculum, highlighting beginning phonics Education Early Learning Standards. Children will also have the opportunity to explore learning through creative play.

Eligibility Children turning 3 or 4 on or before September 30th

Schedule 3 years old: Tuesday and Thursday
9:00 a.m. - 11:30 a.m.
4 years old: Monday, Wednesday and Friday
9:00 a.m. - 11:30 a.m.
Extended Care offered from 8:00 a.m. – 8:45 a.m. AND
11:40 a.m. - 12:00 p.m., M-F. \$3.00 extra per day

Fees Call for information

Transportation None

BOWLING GREEN STATE UNIVERSITY

Child Development Center • Department of Family & Consumer Sciences
Johnston Hall, B.G.S.U. • Bowling Green, Ohio 43403

Contact Director

Web Site www.bgsu.edu/colleges/edhd/cdc/

Contact Phone Number 419-372-7834

Fax Number 419-372-7854

Program Focus A developmentally appropriate
preschool program including
summer session

Eligibility 3-5 years of age and toilet trained

Schedule Monday through Friday,
8:30 a.m. - 11:30 a.m. or 1:00 p.m. - 4:00 p.m.
Summer Hours Monday through Thursday,
8:30 a.m. - 12:30 p.m.
Ask about all day care.

Fees Registration fee – \$30.00 annual
\$720.00 a semester – \$320.00 summer session
Partial scholarships are available

Transportation None

Building Access Barrier free

BRIGHT BEGINNINGS PRESCHOOL

Saint Mark's Lutheran Church
315 South College Drive • Bowling Green, Ohio 43402

Contact	Teacher
Contact Phone Number	419-352-8675 or 419-353-6165
Web Site	www.stmarkslutheranbg.org
Program Focus	Parent run cooperative nursery school nurturing the growth and development of preschoolers
Eligibility	3-5 years of age and toilet trained
Schedule	2 or 3 days per week 9:00 a.m. - 11:45 p.m.
Fees	Call for information
Transportation	None
Building Access	Not barrier free



CHILDREN'S DISCOVERY CENTER

11090 Avenue Road • Perrysburg, Ohio 43551
7033 Light House Way • Perrysburg, Ohio 43551

Contact

Director

Web Site

www.childrensdiscoverycenters.com
E-mail: pdcdc1@aol.com

Contact Phone Number

Avenue Road: 419-874-8203
Light House Way: 419-872-4510

Fax Number

Avenue Road: 419-874-8248
Light House Way: 419-874-7340

Program Focus

Infant and toddler child care
Hands on children's museum concept,
Before and after school care

Eligibility

Ages 6 weeks - 10 years of age

Schedule

Monday through Friday
6:30 a.m. - 6:00 p.m.

Fees

Call for information

Transportation

Transportation for before and after school care

Building Access

Barrier free

Other Related Programs

Spanish and art classes available

CORRINE'S CREATIVE DAY CARE

644 S. Main Street
Bowling Green, Ohio 43402

Contact	Director
Email	Corkarcar@hotmail.com
Contact Phone Number	419-806-4275
Program Focus	Quality home-based child care and preschool program
Eligibility	Birth - 11 years of age
Schedule	Monday through Friday Child care 7:30 a.m. - 4:30 p.m. 10:30 p.m. - 7:30 a.m. Preschool 9:30 a.m. - 1:30 p.m. Saturday hours available
Fees	Call for information
Transportation	No transportation
Building Access	Not barrier free

DISCOVERY KINGDOM

Heritage Corner Health Care Campus
1069 Klotz Road • Bowling Green, Ohio 43402

Contact Director

Email misty@heritagecorner.com

Web Site www.heritagecorner.com

Contact Phone Number 419-728-7014

Fax Number 419-728-0283

Program Focus Daycare and Preschool

Eligibility Ages 6 weeks - 12 years of age

Schedule Monday through Friday
6:30 a.m. - 6:30 p.m.

Fees Call for information

Building Access Barrier free

DUNN'S KIDDIE KARE

215 Gorrell Avenue
Bowling Green, Ohio 43402

Contact	Director
Contact Phone Number	419-353-1737
Program Focus	Preschool Day Care Center Before & after school
Eligibility	3 years old (toilet trained) - fifth grade
Schedule	Monday through Friday 6:30 a.m. - 5:30 p.m.
Fees	Vary by services
Transportation	Limited transportation available to and from schools and field trips
Building Access	Not barrier free

FIRST UNITED METHODIST PRESCHOOL

200 West Second Street
Perrysburg, Ohio 43551

Contact Director

Contact Phone Number 419-874-9318

Program Focus Preschool

Eligibility 3-5 years of age

Schedule Monday through Friday
9:00 a.m. - 12:00 p.m.
1:00 p.m. - 3:00 p.m.

Sunday
9:00 a.m. - 1:00 p.m.

Fees Call

Transportation None

Building Access Barrier free



FORT MEIGS YMCA – ADVENTURE CENTER

210 E. South Boundary
Perrysburg, Ohio 43551

Contact	Director
Web Site	www.ymcatoledo.org
Contact Phone Number	419-873-8202
Program Focus	Infant, toddler/preschool and child care
Eligibility	6 weeks – 6 years of age – after school care
Schedule	Monday through Friday 6:30 a.m. - 6:00 p.m. Part-time slots available
Fees	Call for information
Building Access	Barrier free
Other Related Programs	Before and after school care available at other YMCA program sites
Other Services	Discounts to YMCA members

FOSTORIA EARLY CHILDHOOD CENTER

801 Kirk Street
Fostoria, Ohio 44830

Contact	Director
Contact Phone Number	419-435-4884
Fax Number	419-435-6596
Program Focus	Head Start, public preschool (ages 3-5)
Schedule	Monday through Thursday 8:30 a.m. - 12:00 p.m. or 12:30 p.m. - 4:00 p.m. from September - May
Fees	Call for information
Transportation	Some for public preschool
Building Access	Barrier free
Other Related Programs	Home based, Early Head Start

F.U.M. CHILD LEARNING CENTER

First United Methodist Church • 1506 E. Wooster Street
Bowling Green, Ohio 43402

Contact Director

Contact Phone Number 419-352-3612

Program Focus Toddlers; preschool and child care
Part-time and full-time
Before and after school care

Eligibility 2 years of age - 4th Grade

Schedule Monday through Friday
7:00 a.m. - 5:30 p.m.

Fees Call for information

Transportation Transportation to school

Building Access Barrier free

GRACE PRESCHOOL

601 E. Boundary
Perrysburg, Ohio 43551

Contact Director

Contact Phone Number 419-874-4365

Program Focus Socialization using developmentally appropriate activities

Eligibility Must be either 3 or 4 years of age by August 1st and toilet trained

Schedule 4 years of age: Mornings and afternoons
Monday, Wednesday and Friday
9:00 a.m. - 11:30 a.m.
12:30 p.m. - 3:00 p.m.
Tuition: \$120.00/month

3 years of age:
Monday and Wednesday,
or Tuesday and Thursday
9:15 a.m. - 11:45 a.m.
Tuition: \$90.00/month

Fees Call for information

Transportation None

Building Access Barrier free

JACK AND JILL CHILD CARE, INC. – Bowling Green

128 Palmer Avenue
Bowling Green, Ohio 43402

437 S. Main Street
Bowling Green, Ohio 43402
(6 weeks - 3 years)

Contact Owner

Contact Phone Number 419-353-1001

Program Focus Preschool and Day Care

Eligibility 3 years of age (and toilet trained) through
13 years of age

Schedule Day Care: Monday through Friday,
6:30 a.m. - 12:00 midnight
Preschool: Monday through Friday,
9:00 a.m. - 12:00 noon

Fees Hourly rates

Transportation Provided to schools

Building Access Not barrier free

Other Related Programs Before and after school care,
School-aged summer program

JORDAN FAMILY DEVELOPMENT CENTER

812 North College Drive
Bowling Green, Ohio 43402

Contact Director

Contact Phone Number 419-353-7407

Fax Number 419-353-1100

Program Focus Headstart program
3 to 5 years of age

Eligibility 6 weeks to 5 years of age

Schedule Monday through Friday
8:00 a.m. - 11:30 a.m.
12:00 noon - 3:30 p.m.

Fees Call for information

Transportation None

Building Access Barrier free

KID'S WORLD PRESCHOOL OF PERRYSBURG, INC.

200 East Second Street
Perrysburg, Ohio 43551

Contact	Director
Contact Phone Number	Lynn - 419-350-9953
Program Focus	Play and Learn Activities Pre-K Program
Eligibility	3-5 years of age and toilet trained
Schedule	8:45 a.m. - 11:00 p.m. 11:45 a.m. - 2:00 p.m.
Fees	Call for rates
Transportation	None
Building Access	Elevator or steps

KINDER CARE LEARNING CENTER

610 West South Boundary
Perrysburg, Ohio 43551

Contact

Director

Contact Phone Number

419-874-3777

Fax Number

419-874-0143

Web Site

www.kindercare.com

Program Focus

Through Kinder Care's carefully planned whole child development program, each child will be provided opportunities to grow and develop physically, intellectually, emotionally and socially.

Eligibility

6 weeks to 12 years of age
Preschool 3 to 5 years of age

Schedule

Monday through Friday 6:30 a.m. - 6:00 p.m.

Fees

Rates available upon request

Transportation

To and from area schools

Building Access

Barrier free

Other Related Programs

Summer camp for school-aged children. Preschool phonics, reading, math, Spanish and music. Family events sponsored throughout the year.

LITTLE WONDERS

2534 Woodville Road
Northwood, Ohio 43619

Contact Director

Contact Phone Number 419-691-3783

Fax Number 419-691-3972

Program Focus Day care and preschool
Before and after school care

Eligibility 6 weeks to 12 years of age

Schedule Monday through Friday
5:30 a.m. - 10:30 p.m.

Fees Call for information

Transportation Transportation to certain schools is available

Building Access Barrier free

Other Related Programs Head Start

MONTESSORI SCHOOL OF BOWLING GREEN

515 Sand Ridge Road
Bowling Green, Ohio 43402

Contact Administrator

Contact Phone Number 419-352-4203

Fax Number 419-353-1914

Web Site www.montessorischoolbg.com

Program Focus Montessori School and Preschool – 6th grade

Eligibility 3 years old through 6th grade

Schedule Monday through Friday during the school year
7:30 a.m. - 5:30 p.m.

Fees Call for information

Transportation Bowling Green bus if school age and reside in
Bowling Green School District

Building Access Barrier free

NB DISCOVERY ACADEMY, LLC

1486 S. Poe Road
North Baltimore, Ohio 45872

Contact	Administrator
Contact Phone Number	419-257-3269
Fax Number	419-257-3272
Email Address	NBdiscoveryacademy@gmail.com
Program Focus	Daycare and Preschool, Before and after school care
Eligibility	6 weeks - 12 years of age
Schedule	Child Care: Monday through Friday 6:00 a.m. - 12:00 midnight Preschool Program 8:00 a.m. - 11:30 a.m.
Fees	Private and State funded voucher
Transportation	School bus transportation for elementary students
Building Access	Barrier free
Other Related Programs	Sign Language, Spanish, Summer program for school-aged children, Anti-bullying program, Extra Learning Opportunities – personalized activities designed for children

OWENS COMMUNITY COLLEGE CHILD CARE CENTER

30335 Oregon Road
Perrysburg, Ohio 43551

Contact	Manager
Contact Phone Number	567-661-7404 ext. 7404, 7405, 7406 1-800-GO-OWENS
Fax Number	567-661-7868
Program Focus	Quality child care and preschool, NAEYC accredited
Eligibility	6 weeks to 5 years of age – school year 6 weeks to 10 years of age – summer Owens students and faculty given first priority. Must come in to fill out application (Available on-line also).
Schedule	Monday through Friday 7:15 a.m. - 6:00 p.m.
Fees	Vary – Student discount
Transportation	None
Building Access	Barrier free
Other Related Programs	Early Childhood Education Lab – student involvement
Other Services	Collaborates with County Human Services clients

PENTA COUNTY PRESCHOOL

Penta County Vocational School
9301 Buck Road • Perrysburg, Ohio 43551

Contact	Director
Contact Phone Number	419-666-1120 or 419-661-6486
Fax Number	419-661-6479
Program Focus	Day care for infants and preschool program Monday through Thursday for 3,4 and 5 year olds
Eligibility	Infant program preference given to parenting teens
Schedule	Preschool is open to public, September through May Preschool: Monday through Thursday 9:00 a.m. - 11:00 a.m., 12:30 p.m. - 2:30 p.m.
Fees	Infants: \$65.00 weekly, Preschool: \$65.00 monthly Yearly preschool: \$595.00
Transportation	None
Building Access	Barrier free
Other Related Programs	Early Childhood Education Program for students, GRADS Program
Other Services	Speech and hearing specialist – nurse available

PLAN, DO & TALK PRESCHOOL AND PRIMARY SCHOOL

115 East Oak Street
Bowling Green, Ohio 43402

Contact	Director
Contact Phone Number	419-352-5039
Web Site	www.plandotalk.org
Program Focus	Day care and Preschool (half-day or all-day) Private all-day Kindergarten up to second grade PDT Club – After school care
Eligibility	2-1/2 years of age (toilet trained) – third grade
Schedule	Day care: Monday through Friday 6:30 a.m. - 6:00 p.m. Preschool: Monday through Friday 9:00 a.m. - 3:00 p.m. Flexible schedule to meet family needs
Fees	Call for rates
Transportation	To and from Primary School by Bowling Green City School Buses. Provided by Plan, Do & Talk for after-school students in Bowling Green schools. No transportation for preschool provided
Building Access	Can be arranged
Other Related Programs	Summer Science Camps (hands-on) available for ages 2-1/2 - 12 years of age

RAINBOW COOPERATIVE NURSERY SCHOOL

541 1/2 West Wooster Street
Bowling Green, Ohio 43402

Contact	Director
Contact Phone Number	419-352-5437
Web Site	www.rainbowpreschoolbg.org
Program Focus	Cooperative nursery school
Eligibility	Must be 3 or 4 years old on or before September 30
Schedule	3 years of age: Tuesday and Thursday 9:10 a.m. - 11:40 a.m. 4 years of age: Monday, Wednesday and Friday 9:10 a.m. - 11:40 a.m. Afternoon session available – as needed 12:30 p.m. - 3:00 p.m. September through May
Fees	Call registrar
Transportation	None
Building Access	Barrier free

ROSSFORD SPECIAL NEEDS PRESCHOOL PROGRAM

719 Dixie Highway
Rossford, Ohio 43460

Contact	Special Services at Student Services Building
Contact Phone Number	419-666-4267 or 419-661-2892
Program Focus	<p>Preschool experiences within an early childhood setting for children who have special needs and their families. A limited number of typically developing children participate as peer role models. Program provides a free comprehensive assessment of a child's development.</p> <p>Appropriate support services are provided such as speech, physical and occupational therapy.</p>
Eligibility	<p>Eligibility as a child with a disability: 3 – 5 years of age, residing in Rossford Exempted School District, experiencing significant delays in any of the following areas of development: communication, cognitive, social-emotional, hearing, vision or motor skills.</p> <p>Eligibility for typically developing children: 3 – 5 years of age, residing in the Rossford Exempted School District.</p>
Schedule	<p>Monday through Thursday</p> <p>8:50 a.m. - 11:20 a.m. or 12:50 p.m. - 3:20 p.m.</p>
Fees	No charge for children eligible for special needs programming; a fee is charged for typically developing children; call 666-4267 for information. \$500.00/year.
Transportation	Provided for children with special needs
Building Access	Barrier free
Other Related Programs	Itinerant/home based services

ST. JOHN'S HILLTOP PRESCHOOL

5520 Fremont Pike
Stony Ridge, Ohio 43463

Contact	Director
Contact Phone Number	419-837-2223
Fax Number	419-837-5578
Program Focus	Christian Preschool
Eligibility	18 months to 5 years of age (and toilet trained)
Schedule	3 years of age – Tuesday and Thursday 4 and 5 years of age: Monday - Friday Morning Sessions – 9:00 a.m. - 11:30 a.m. Afternoon sessions – 12:30 p.m. - 3:00 p.m. Extended Care offered 6:30 a.m. - 6:00 p.m. (3 - 5 years of age) After school through 5th grade
Fees	Call for rates
Transportation	None
Building Access	Barrier free
Other Services	Lutheran Church

ST. PAUL PRESCHOOL

State Route 582 at Forest Road
P.O. Box 239 • Haskins, Ohio 43525

Contact Director

Contact Phone Number 419-823-1731

Program Focus Christian preschool setting where the physical, social, emotional, intellectual and spiritual growth of the child is nurtured.

Eligibility 3 to 5 years of age and toilet trained

Schedule Monday, Wednesday and Friday
9:00 a.m. - 11:30 a.m.

Fees Fees: \$130.00 per month and \$45.00 application fee

Transportation None

Building Access Barrier free



ST. ROSE PARISH PRESCHOOL

217 E. Front Street
Perrysburg, Ohio 43551

Contact	Director
Contact Phone Number	419-874-5631
Fax Number	419-874-1002
Web Site	www.saintroseonline.org
Program Focus	Preschool program, half days
Eligibility	3 – 5 years of age
Schedule	Monday through Friday 9:15 a.m. - 11:30 a.m. 12:45 p.m. - 3:00 p.m.
Fees	Call for information
Transportation	None
Building Access	Not barrier free

TENDER AGE DAYCARE CENTER

1249 Ridgewood Drive
Bowling Green, Ohio 43402

Contact Director

Contact Phone Number 419-352-2506

Program Focus Providing a safe, caring environment for learning through a balance of quiet and active play.

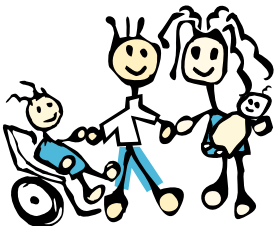
Eligibility 6 weeks – 12 years of age

Schedule Monday through Friday
6:30 a.m. - 6:00 p.m.

Fees Call for information

Transportation To and from local schools

Building Access Not barrier free



THE GATHERING PLACE

1134 Professional Drive
Perrysburg, Ohio 43551

Contact Director

Contact Phone Number 419-873-0870

Fax Number 419-873-0876

Web Site www.thegathering-place.org

Program Focus Child care and preschool program
Before and after school care

Eligibility 6 weeks to 12 years of age

Schedule Monday through Friday
6:00 a.m. - 6:00 p.m.

Fees Call for information

Transportation To and from local schools, school aged children
(not Fort Meigs)

Building Access Barrier free

THE NURTURING NOOK Infant and Toddler Care

920 N. Main Street
Bowling Green, Ohio 43402

Contact	Owner
Contact Phone Number	419-373-1771
Web Site	www.thenurturingnook.org
Program Focus	Quality child care and preschool education program with a readiness focus.
Eligibility	6 weeks – 5 years of age
Schedule	Monday through Friday 6:00 a.m. - 6:00 p.m. Part-time available
Fees	Call for information
Transportation	None
Building Access	Barrier free
Other Services	Sibling Discount

THE PRESCRIBED PEDIATRIC CENTER AND GRADY DAY PROGRAM

UTMC EduCare • 1932 Birchwood Avenue
Toledo, Ohio 43614

Contact	Director
Contact Phone Number	419-381-7370 or 419-530-6726
Web Site	www.prescribedpediatrics.org
Program Focus	Daytime non-resident day care Nursing staff on duty, Educational Program, using Doctor's orders, Occupational Therapy, Speech Therapy, Physical Therapy as needed
Eligibility	Medically fragile children Ages 4 weeks to 12 years of age per doctor's order
Schedule	Monday through Friday 6:30 a.m. - 6:00 p.m.
Fees	Multiple funding sources
Transportation	Cab arrangements, Public school busing, or arranged through UTMC Educare vehicle services Public ambulance services
Building Access	Barrier free
Other Services	Vision Specialists as needed

TODDLERS SCHOOL

943 North Dixie Highway
Rossford, Ohio 43460

Contact

Director

Contact Phone Number

419-666-9843

Fax Number

419-661-0140

Program Focus

High Scope Curriculum

Eligibility

Ages 6 weeks – 12 years of age

Schedule

Monday through Friday
6:00 a.m. - 6:00 p.m.

Fees

Please call for rates

Transportation

To and from transitional kindergarten and
local schools

Other Locations

Starr Avenue, Navarre Street (Oregon),
Lagrange Street, Washington Street (Downtown
Toledo), Jackman Road

VILLAGE EARLY CHILDHOOD CENTER

209 North Main Street
Walbridge, Ohio 43465

Contact	Director
Contact Phone Number	419-661-1313
Fax Number	419-662-4718
Program Focus	Preschool and child care; toddlers Part-time and full-time Before and after school care
Eligibility	18 months - 12 years of age
Schedule	Monday through Friday 6:00 a.m. - 6:00 p.m.
Fees	Call for information
Transportation	Transportation to Lake Schools
Building Access	Some stairs

WESTSIDE MONTESSORI CENTER

13587 Roachton Road
Perrysburg, Ohio 43551

Contact	Director
Contact Phone Number	419-872-5008
Web Site	www.wsmctoledo.org
Program Focus	Montessori Program
Eligibility	18 months through Kindergarten
Schedule	Montessori Program 7:30 a.m. - 6:00 p.m.
Fees	Varies
Transportation	None
Building Access	Barrier free



WILLOW EARLY CHILDHOOD CENTER

17700 Beaver Street
Grand Rapids, Ohio 43522

Contact	Director
Contact Phone Number	419-832-5437
Program Focus	Childcare and Preschool
Eligibility	18 months to 11 years of age (before and after school)
Schedule	Monday through Friday 6:30 a.m. - 6:00 p.m.
Fees	Call for rates
Transportation	School bus (pick up and drop off)
Building Access	Barrier free
Other Services	Before and After School Care Music once a week

WONDERLAND OF LEARNING

1235 Ridgewood Drive
Bowling Green, Ohio 43402

Contact Director

Contact Phone Number 419-354-9500

Program Focus Providing a safe, caring environment for learning through a balance of quiet and active play

Eligibility 6 weeks through 5 years

Schedule Monday through Friday
6:30 a.m. - 6:00 p.m.

Fees Call for information



WOOD COUNTY SPECIAL NEEDS PRESCHOOL PROGRAM

Wood County Educational Service Center
1867 Research Drive • Bowling Green, Ohio 43402

Contact	Director of Special Needs Preschool Supervisor
Contact Phone Number	419-354-9010 (ext. 174)
Fax Number	419-354-1146
Program Focus	<p>Early childhood experiences within a group setting of a public school or itinerant school/home-based service for children who are typically developing or have special needs.</p> <p>Children with special needs are served within the framework of an individualized Educational Program (IEP)</p> <p>Appropriate support services are provided by speech, PT, OT and Adapted PE specialists.</p>
Eligibility	<p>3-5 years of age</p> <p>Must reside in a Wood County school district served by the Wood County Educational Service Center (Eastwood, Elmwood, Northwood, North Baltimore, Otsego, Perrysburg)</p>

(continued on next page)

WOOD COUNTY SPECIAL NEEDS PRESCHOOL ...continued

Wood County Educational Service Center
1867 Research Drive • Bowling Green, Ohio 43402

Eligibility

Child experiences significant delays in any of the following developmental areas: Speech, language, hearing, vision, orthopedic or physical involvement; or behavioral problems, emotional conflict, overall development
Meet eligibility criteria guidelines as set forth in the Rules for Preschool Children with Disabilities.
Typically developing children are also included.

Schedule

Most sites
Monday through Thursday,
2-1/2 hour programming – parent involvement
Otsego
2 full days
Northwood
Monday and Wednesday - full days
Tuesday and Thursday - full days

Fees

Typically developing children pay on a sliding fee scale
No charge for children eligible for special needs programming

Transportation

Provided for children with special needs

Building Access

Most sites are barrier free

Other Related Programs

Itinerant/home-based services

WOOD LANE EARLY INTERVENTION

812 N. College Street
Bowling Green, Ohio 43402

Contact	Early Intervention Coordinator
Contact Phone Number	419-353-7407, ext. 244 or 1-800-356-3218
Fax Number	419-352-5325
Website	www.woodlane.us
Program Focus	Service and supports available for families with children experiencing developmental delays and disabilities. Services are provided within the family's everyday routines, activities and places. Consultation available from a team of providers
Eligibility	Wood County residents 0-3 years of age must have a qualifying medical condition or one developmental delay and have an IFSP in place through the Help Me Grow system.
Schedule	Monday through Friday 8:30 a.m. - 3:30 p.m.
Fees	None
Building Access	Barrier free
Other Services	Family Support Services, Toy Lending Library, Service and Supports Administration

WOOD LANE SCHOOL

1921 East Gypsy Lane Road
Bowling Green, Ohio 43402

Contact

Director Children's Services or
Children's Services Supervisor

Contact Phone Number

419-352-5115 or 1-800-356-3218

Fax Number

419-352-9602

Website

www.woodlane.us

Program Focus

Wood Lane offers a viable educational alternative for students with varying disabilities from birth through age 22.

Eligibility

Wood Lane provides services to children who reside in one of the local school districts.

Schedule

Monday through Friday
8:30 a.m. - 3:30 p.m.

Fees

None

Transportation

Bus transportation available

Building Access

Barrier free

Other Services

Family Support Services, Service and Supports
Administration (services coordination)

WSOS CHILD DEVELOPMENT PROGRAM – WOOD COUNTY

WSOS Child Development Programs • 812 North College Drive
Bowling Green, Ohio 43402

Contact	Center Supervisor
Contact Phone Number	Bowling Green Office: 419-353-7407
Fax Number	419-353-1100
Website	www.wsos.org
Program Focus	WSOS Early Childhood Programs are comprehensive, developmentally appropriate educational programs for children ages birth to four and their families. The program is designed to increase school readiness and assist children and parents in developing to their fullest potential.
Eligibility	Birth to 4 years of age
Program Options	WSOS offers several options for families: Center-Based– Children attend classes Monday through Thursday for 3 1/2 hours per day Home-Based– Families receive a Home Visit each week and attend a group socialization day twice per month.
Fees	Sliding scale for ECE, none for Head Start
Transportation	None
Building Access	Barrier free
Other Related Programs	Physical. Dental, Hearing & Vision Screenings; Parent Activity Council; Parent Training; Social Service Department; Nutrition Component

WSOS CHILD DEVELOPMENT PROGRAMS – LOCATIONS

Bowling Green WSOS Child Development Program
Jordan Family Development Center
812 North College Drive
Bowling Green, Ohio 43402
419-353-7407

Bradner WSOS Child Development Program
St. James Lutheran Church
451 Caldwell Street
Bradner, Ohio 43406
419-288-2590

Pemberville WSOS Child Development Program
531 E. Front Street
P.O. Box 115
Pemberville, Ohio 43450
419-287-4057

Fostoria WSOS Child Development Program
Fostoria Early Childhood Center
801 Kirk Street
Fostoria, Ohio 44830
419-435-4883

Perrysburg WSOS Child Development Program
St. Timothy's Episcopal Church
871 E. Boundary Street
P.O. Box 851
Perrysburg, Ohio 43551
419-874-4644

Rossford WSOS Child Development Program
United Methodist Church
719 Dixie Highway
Rossford, Ohio 43460
419-661-0502

YW CHILD CARE RESOURCE AND REFERRAL

1616 Wooster St., #25
Bowling Green, Ohio 43402

Contact

Director

Contact Phone Number

419-353-7801 • 1-800-632-3053
Toledo Regional Office: 1-800-632-3052

Program Focus

Training for family child care providers,
Help parents find affordable/quality child care,
Database registry of licensed day care centers
and family child care providers throughout Wood
and Fulton counties
The Toledo office maintains a data base of
registered centers and homes for Lucas, Fulton,
Wood & Ottawa Counties

Eligibility

Parents, Licensed Day Care Centers and Type B
Family Child Care (licensing not required) or
Type A homes

(continued on next page)

YW CHILD CARE RESOURCE AND REFERRAL...continued

1616 Wooster St., #25
Bowling Green, Ohio 43402

Schedule

Call between
8:30 a.m. - 5:00 p.m.

Fees

No fee for registering. Sliding fee scale for parents
requesting referrals

Transportation

None

Building Access

Barrier free

Other Related Programs

Call for information

Other Services

School-aged Care Services
Corporate Services
Family Child Care Training
Business Start-Up Assistance

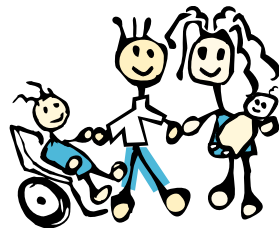


TABLE OF CONTENTS

Behavioral Connections of Wood County – Behavioral Health Services..... 95

The LINK - Information and Referral Services97

Women’s Chemical Dependency Residential Services..... 98

B.G.S.U. Psychological Services..... 99

B.G.S.U. Speech and Hearing Clinic 100

Bureau for Children with Medical Handicaps 101

Children’s Resource Center 102

Cocoon Shelter 104

Dental Center of Northwest Ohio 105

First Step Family Violence Intervention Center..... 106

Fostoria Early Childhood Center 107

Help Me Grow (Early Intervention)..... 108

Ohio State University Extension, Wood County 109

REACH (Regional Infant Hearing Program – Region 1) 110

State Support Team 1 111

St. Vincent Mercy Children’s Hospital Spina Bifida Center 113

The Easter Seal Society of Northwestern Ohio 114

Wood Co. Alcohol, Drug Addiction & Mental Health Services Board 116

Wood County Board of Developmental Disabilities 117

Wood County Department of Job and Family Services

 Children’s Services..... 118

 Employment Resource Center 119

 Social Services 120

 Temporary Assistance 121

(Continued on next page.)

TABLE OF CONTENTS

Wood County Educational Service Center	
Home Based Services for Children with Special Needs	122
Preschool Special Needs	123
Wood County Health Department	
Child Health Clinic	124
Immunization.....	125
WIC.....	126
Wood County Hospital	
Rehabilitation Services	127
The Center for Child Development.....	128



BEHAVIORAL CONNECTIONS OF WOOD COUNTY INC.

Behavioral Health Services

1010 N. Prospect • Bowling Green, Ohio 43402

27072 Carronade Drive, Suite A, B & C • Perrysburg, Ohio 43551

Fees

Sliding fee scale, Insurance

Transportation

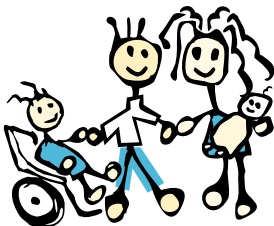
Rarely for some programs

Building Access

Handicapped accessible

Other Related Programs

Employment services, sexual offender treatment, prevention programming, psychosocial rehabilitation services



BEHAVIORAL CONNECTIONS OF WOOD COUNTY INC.

The LINK - Information and Referral Services
1022 N. Prospect St. • Bowling Green, Ohio 43402

Contact	Program Manager
Web Site	www.behavioralconnections.org
Contact Phone Number	24 hour Hotline: 419-352-1545 or 1-800-472-9411
Program Focus	Provides information and referral, crisis intervention for Wood County residents
Eligibility	Serves anyone who calls or drops in
Schedule	24 hours a day, 7 days a week
Fees	No charge for calls or drop-ins
Transportation	None
Building Access	Handicapped accessible
Other Services	Can arrange pre-hospitalization screening, crisis counseling, domestic violence advocacy services

BEHAVIORAL CONNECTIONS OF WOOD COUNTY INC.

Women's Chemical Dependency Residential Services
1033 Devlac Grove Road • Bowling Green, Ohio 43402

Contact Program Director

Web Site www.behavioralconnections.org

Contact Phone Number 419-352-5387 or 419-872-2419

Program Focus 10 week residential treatment for women who have chemical dependencies

Eligibility Female residents, 18 and over, who reside in Wood County and the surrounding counties

Schedule
Monday through Friday
8:00 a.m. - 4:30 p.m.
After hours and holidays
call the Link at 352-1545 or 1-800-472-9411

Fees Sliding fee scale, Medicaid

Transportation Transportation may be arranged

Building Access Handicapped accessible

Other Services Aftercare option following 10 week program

B.G.S.U. PSYCHOLOGICAL SERVICES

Psychology Building
Bowling Green State University • Bowling Green, Ohio 43403

Contact	Director or Administrative Assistant
Web Site	www.bgsu.edu/departments/psych/Faculty_programs.html/PSC.html
Contact Phone Number	419-372-2540
Program Focus	<p>Assessments and diagnostic evaluation Psychotherapy for children, adults, couples, & families Consultations with other professionals providing services to the clients they serve Training – In-service educational programs and workshops Program development and evaluation - assistance in planning and analyzing treatment Speakers - dealing with mental health, human adjustment, and community programs</p>
Eligibility	Wood County residents and surrounding communities
Schedule	<p>Monday through Friday 8:00 a.m. - 5:00 p.m. Some evenings available</p>
Fees	Sliding scale and insurance accepted
Building Access	Barrier free



B.G.S.U. SPEECH AND HEARING CLINIC

Department of Communication Disorders, Speech and Hearing Clinic
B.G.S.U. • 200 Health Center Building • Bowling Green, Ohio 43403

Contact	Clinic or Department Secretary
Web Site	www.bgsu.edu/departments/cdis/cdis_content/clinics/clinics.html
Contact Phone Number	419-372-2515
Program Focus	<p>Speech, language and hearing evaluations Feeding/swallowing evaluation of high-risk infants, children and adults Hearing aid evaluations, fitting and dispensing Treatment for speech, language and hearing problems Parent training and information on speech, language and hearing development Individual and group treatment available</p>
Eligibility	All ages served
Schedule	<p>Monday through Friday 8:00 a.m. - 5:00 p.m.</p>
Fees	<p>Basic fees, sliding scale. Discounts for university full-time students.</p>
Building Access	<p>Handicap accessible - sidewalk and automatic entrance on west end and an elevator - handicap parking and designated parking for speech and hearing clinic</p>
Other Related Programs	Audiological Services; Speech, Hearing and Language Services

WOOD COUNTY HEALTH DEPARTMENT BUREAU FOR CHILDREN WITH MEDICAL HANDICAPS (BCMh)

Wood County Health Department
1840 East Gypsy Lane Road • Bowling Green, Ohio 43402

Contact Supervisor of Community Nursing Services

Web Site www.co.wood.oh.us/healthdepartment/

Contact Phone Number 419-352-8402 or 419-244-1610

Program Focus Promote the early identification of children with handicapping conditions. Treatment of those children by appropriate health care providers; Provide funding services for the diagnosis of medically eligible conditions, funding for treatment services if the family is financially eligible, and collaboration with public health nurses and local health department; Facilitate access to health care and assist families to utilize appropriate sources of payment for services for their child. Emotional and behavioral problems not covered.

Eligibility Under 21 and resident of Ohio

Fees Diagnosis is free

CHILDREN'S RESOURCE CENTER (CRC)

1045 Klotz Road • P.O. Box 738
Bowling Green, Ohio 43402

Contact

Director
Designated Representative: Intake Worker

Contact Phone Number

419-352-7588 or 1-888-466-KIDS

Program Focus

Comprehensive mental health services for children;
Parenting Education Service, birth to 5 years of age;
Early childhood mental health consultation for early care and
learning programs serving children birth through 5 years of age;
Preschool Sexual Abuse Prevention Program

Eligibility

Birth to 21 years of age and their families

Schedule

Monday through Friday
8:00 a.m. - 8:00 p.m.
Crisis Intervention Services available
24 hours, 7 days a week

Fees

Sliding scale based on income and size of family
Will accept health insurance (Medicaid included)

(continued on next page)

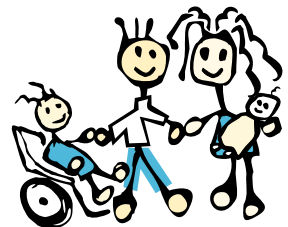
CHILDREN'S RESOURCE CENTER (CRC)...continued

1045 Klotz Road • P.O. Box 738
Bowling Green, Ohio 43402

Transportation Provided on a limited basis

Building Access Barrier free

Other Services Diagnostic Assessment; Individual, Family and Group Therapy; School-Based Services; Community/Intensive Home-Based Services; Partial Hospitalization, Short Term Residential Treatment; Substance use treatment; Psychiatric Services; Volunteer Program



COCOON SHELTER

P.O. Box 1165
Bowling Green, Ohio 43402

Contact	Designated Representative
Web Site	www.CocoonShelter.org
Contact Phone Number	For services 24 hours a day, call the crisis line thru the LINK at 419-352-1545 or 1-800-472-9411 Non Emergency Number 419-373-1730
Program Focus	The Cocoon Shelter provides safe emergency housing to victims of domestic violence and their children. Services include: face to face and phone crisis intervention; 24 hour access to free, safe emergency housing; provision of emergency food, clothing and personal care items; emergency financial assistance; intake assessment and case plan development; case management; individual and group support; in-depth safety planning; advocacy and support; regular house meetings; computer use and internet access; assistance in finding financial, medical, legal and housing assistance; information and referrals to specialized community resources; and follow up/outreach services for women who have left shelter.
Fees	None
Transportation	Available for residents and those needing to be transported to shelter.
Building Access	Barrier Free
Other Services	Currently specialized services for children are accessed through the Children's Resource Center and Wood County's Help Me Grow Program.

DENTAL CENTER OF NORTHWEST OHIO

2138 Madison Avenue
Toledo, Ohio 43604

Contact	Director or Designated Representative
Web Site	None
Contact Phone Number	419-241-6215 Mobile Unit 419-241-1641 or Toll Free 1-866-378-6965
Program Focus	Dental care for low income children and adults
Eligibility	Low Income, Public Assistance
Schedule	Please call for appointment
Fees	Based on Medicaid rate
Transportation	None
Building Access	Wheel chair accessible
Other Services	Mobile unit visits the Wood County Health Department Please call 419-241-1641 or 1-866-378-6965 for further details or to set up an appointment

FIRST STEP FAMILY VIOLENCE INTERVENTION CENTER

P.O. Box 1103
Fostoria, Ohio 44830

Contact	Executive Director: Terry Mercer
Web Site	www.firststepweb.org
Contact Phone Number	419-435-7300 FAX: 419-435-5510
Hotline	1-800-466-6228
Program Focus	Family violence; temporary, safe residence for adult females and their children (up to age 17); 24-hours per day, 7 days per week support hotline; advocacy; case management; PASSAGES; comprehensive outreach services
Eligibility	Wood, Wyandot, Seneca and Sandusky County residents
Schedule	Monday through Friday 9:00 a.m. - 5:00 p.m. 24 hour, 7 days per week crisis hotline
Fees	Sliding fee scale and/or payment plan offered. NO ONE is denied services due to inability to pay.

FOSTORIA EARLY CHILDHOOD CENTER

801 Kirk Street
Fostoria, Ohio 44830

Contact Shirley Bechstein

Web Site www.wsos.org

Contact Phone Number 419-435-4884 Fax: 419-435-6596

Program Focus Head Start and public preschool (ages 3-5)

Eligibility Based on income for most programs

Schedule Monday through Thursday
8:30 a.m. - 12:00 p.m. or
12:30 p.m. - 4:00 p.m.
from September to May

Fees Based on income eligibility

Transportation Some for public preschool

Building Access Handicap accessible

Other Services Referrals to numerous other agencies and WSOS programs. This location also houses Help Me Grow from Seneca County (also serves Wood and Hancock Co. children), Seneca County Health Department, WIC, EHEAP Program and Summer Cooling Program

HELP ME GROW (Early Intervention)

Wood County Health Department
1840 East Gypsy Lane • Bowling Green, Ohio 43402

Contact Intake and Referral Coordinator – ext. 3249

Web Site 419-352-8402 or 1-866-861-9338

Contact Phone Number www.co.wood.oh.us/healthdepartment/

Program Focus Outreach, Child Find
Prenatal Visits
Newborn Home Visits
Ongoing Home Visitation
Service Coordination; IFSP Development
Family Support Service
Evaluation to determine eligibility for Early Intervention
Specialized Services
Parents as Teachers

Eligibility Prenatal and birth to three years of age

Schedule Monday through Friday
8:30 a.m. - 4:30 p.m.

Fees None

Building Access Barrier free

Other Related Programs Family Information Network
Parents as Teachers Program

OHIO STATE UNIVERSITY EXTENSION, WOOD COUNTY

639 South Dunbridge Road, Suite 1
Bowling Green, Ohio 43402

Contact	Director
Web Site	www.wood.osu.edu
Contact Phone Number	(419) 354-9050
Program Focus	<p>Focus on adults/parents and children's developmental stages, parenting resources Teach self-esteem, decision making and goal setting Programs and educational materials to help parents develop skills in their children Information on nutrition for adults and youth Preventive discipline and stress/time management Financial Management</p>
Eligibility	Open to all Wood County residents
Schedule	<p>8:30 a.m. - 4:30 p.m. Monday through Friday Evening Programs as needed</p>
Fees	Minimal fees to cover resource materials
Building Access	Barrier free
Other Related Programs	<p>4-H Youth Development; Agricultural and Horticultural Programs Food Stamp Nutrition Program</p>

REACH (REGIONAL INFANT HEARING PROGRAM – REGION 1)

5150 Harroun Road
Sylvania, Ohio 43560

Contact	Outreach Coordinator/Data Specialist
Contact Phone Number	(419) 824-1392
Fax Number	(419) 824-1456
Program Focus	Provides follow-up for infants that do not pass the Universal Newborn Hearing Screening at birth. Also provides information and outreach services for families of infants and toddlers who are Deaf or Hard of Hearing
Eligibility	Children aged birth to three diagnosed with a permanent hearing loss of any degree. It can be permanent conductive, sensorineural or neural in nature
Schedule	Home visits scheduled at family's convenience, Monday through Friday
Fees	All services are offered at no charge
Transportation	None
Building Access	Visits conducted in home
Other Services	Home visits, provide information on all communication options available, link families to specialists as needed/requested, inform families of opportunities to interact with the Deaf community and offer parent to parent support. Region 1 covers Defiance, Fulton, Lucas, Henry, Ottawa, Sandusky, Seneca, Williams and Wood counties.

STATE SUPPORT TEAM 1

2275 Collingwood Blvd.
Toledo, Ohio 43620

Contact	Director
Contact Phone Number	(419) 720-8999 or 1-800-346-8495
Web Site	www.sstr1.org
Program Focus	<p>Early Learning and School Readiness</p> <p>Early childhood personnel provide technical assistance and professional development on areas governing services to children from birth through eight years of age. Areas of assistance include Public School Preschool, Preschool Special Education, Head Start, Connections, Indicators of Success, Early Literacy, preschool transition, interagency agreements, Preschool Licensing, Operating Standards for Ohio's Schools serving Children with Disabilities, Ohio procedures, and others.</p>
Eligibility	Families, early childhood centers, school districts, educational service centers and community schools for children from birth to age 22
Schedule	<p>Monday through Friday</p> <p>8:00 a.m. - 4:00 p.m.</p>
Fees	None

(continued on next page)

STATE SUPPORT TEAM 1 (CONTINUED)

2275 Collingwood Blvd.
Toledo, Ohio 43620

Building Access 2nd floor elevator

Other Related Programs The State Support Team Region 1 provides cost-free services to families, educators, and agencies regarding educational law, curriculum and instruction in Defiance, Fulton, Hancock, Henry, Lucas, Ottawa, Paulding, Putnam, Sandusky, Seneca, Van Wert, Williams, and Wood counties. Service areas include special education law/compliance; educational program design; research based instructional practices; district and school improvement processes including standards based assessment, curriculum and instruction; preschool rules and program design; and parent and family supports and resources.



ST. VINCENT MERCY CHILDREN'S HOSPITAL Spina Bifida Program

St. Vincent Mercy Children's Hospital Spina Bifida Center of Northwest Ohio
2222 Cherry St., Suite 2300 • Toledo, Ohio 43608

Contact	Denise Misner / Scheduler
Web Site	www.mercyweb.org – then go to St. Vincent Mercy's Children's Hospital, Special Programs, Spina Bifida Optical
Contact Phone Number	(419) 251-8015 or 1-877-251-5437 Ext. 18015
Program Focus	Comprehensive medical care of the child with Spina Bifida Education Service coordination Counseling services are available
Eligibility	Birth through adulthood in northwest Ohio, prenatal consultation as requested
Schedule	Clinic hours are by appointment Wednesday mornings
Fees	Private insurance, Medicaid, Medicare, BCMH, and private pay are accepted
Transportation	TARTA accessible and free parking
Building Access	Barrier free
Other Related Programs	Mercy Children's Hospital has a Spina Bifida Library and sponsors a Spina Bifida Parent Network
Other Services	See St. Vincent Mercy Children's Hospital web site

THE EASTER SEAL SOCIETY OF NORTHWESTERN OHIO

435 S. Hawley Street, Suite A
Toledo, Ohio 43609

440 S. Reynolds Road
Toledo, Ohio 43615

Contact Program Coordinator

Contact Phone Number 419-535-5750

Program Focus Provide services and support to people with disabilities and their families so they can achieve independence. Educate the public about the concerns and capabilities of people with disabilities.

Eligibility Varies by program

Schedule Monday through Friday
8:30 a.m. - 5:00 p.m.

Fees Varies by program - Sliding fee scale in place
No child turned away due to inability to pay

Transportation None

Building Access Barrier free

Other Services Speech Services provided

(continued on next page)

THE EASTER SEAL SOCIETY OF N.W. OHIO...CONTINUED

435 S. Hawley Street, Suite A
Toledo, Ohio 43609

Other Related Programs

Home Care - This includes personal care, homemaker, and respite care. This service provides relief from caregiving for family members and allows the person with disability to remain in the home.

Equipment Loan - Hospital-type equipment is available for temporary loan to people with a medical referral. Loans run for three months and extensions are possible. Also, regular and special needs carseats are available.

Recreation & Summer Camp - Residential camp and summer daycamp are available for children with disabilities.

Public & Professional Education - Staff members are available to make presentations about disabilities to professionals and the public.



WOOD COUNTY ALCOHOL, DRUG ADDICTION...BOARD

Wood County Alcohol, Drug Addiction & Mental Health Services Board
745 Haskins Road, Suite H • Bowling Green, Ohio 43402

Contact Director or Alternate Representative

Web Site www.wcadamh.org

Contact Phone Number 419-352-8475

Program Focus The ADAMHS Board plans, funds, monitors and evaluates alcohol, drug and mental health services and facilities for Wood County

Schedule Monday through Friday
8:00 a.m. - 4:00 p.m.

Building Access Barrier free

Other Related Programs 6 Funded Agencies:
Children's Resource Center
Family Service of Northwest Ohio
Behavioral Connections of Wood County
Educational Service Center
NAMI of Wood County
The Link

Other Services Supports the Suicide Prevention Coalition, CIT Programs and the Family and Children First Council

WOOD COUNTY BOARD OF DEVELOPMENTAL DISABILITIES

Wood County Board of Mental Retardation and Developmental Disabilities
1921 East Gypsy Lane • Bowling Green, Ohio 43402

Contact	Director Children's Services Services and Supports Administration Coordinator
Web Site	www.woodlane.us
Contact Phone Number	419-352-5115
Program Focus	Provides comprehensive life-spanning services to individuals with moderate, severe or profound mental retardation, and supportive services to those individual's families
Eligibility	Contact Services and Supports Administration Coordinator
Schedule	Monday through Friday 8:00 a.m. - 4:30 p.m.
Fees	None
Building Access	Barrier free
Other Related Programs	Early Intervention Program, Wood Lane School, Adult Services, Wood Lane Industries, Community Employment Services, Family Resources, Residential Services, Service Coordination, Special Olympics

WOOD CO. DEPT. OF JOB & FAMILY SERVICES – Children’s Services

1928 East Gypsy Lane Road
 P.O. Box 679 • Bowling Green, Ohio 43402

Contact Children’s Services Supervisor

Web Site www.woodcountyjfs.com

Contact Phone Number 419-354-9667 or 1-866-860-4136

Program Focus Risk Assessment for children at-risk of abuse or neglect
 In-home supervision
 Foster care or alternative substitute care
 Adoption services
 Referrals for counseling, medical or legal services

Eligibility Birth to 18th Birthday – Based on need for family services

Schedule Monday, Wednesday, Thursday and Friday
 8:00 a.m. - 4:30 p.m.
 Tuesday
 8:00 a.m. - 6:00 p.m.
 Emergency service call 419-354-9669

Fees None

Building Access Barrier free

Other Services Adoptive and foster parent training & certification

WOOD CO. DEPT. OF JOB & FAMILY SERVICES – Employment Resource Center

W.C. Employment Resource Center, One Stop Training & Employment Services
1928 East Gypsy Lane Road • P.O. Box 679 • Bowling Green, Ohio 43402

Contact	Designated Representative
Web Site	www.jobsolutions.net
Contact Phone Number	419-352-7566 or 1-888-282-1118
Program Focus	Expands training and employment opportunities for all adults to help them obtain employment and become self-supporting
Eligibility	Adults receiving public assistance and all other adults needing assistance with employment
Schedule	Monday, Wednesday, Thursday and Friday 8:00 a.m. - 4:00 p.m. Tuesday 8:00 a.m. - 5:30 p.m.
Fees	None
Building Access	Barrier free
Other Related Programs	Employment Assistance, Résumé Services, Computer Job Search, Job Postings, Assessment of adults with income below poverty level for federal WIA funding for education/training assistance. WIA funding for displaced workers. A comprehensive menu of programs and services to help job seekers and businesses meet their short term and long term work force development needs.

WOOD CO. DEPT. OF JOB & FAMILY SERVICES – Social Services

1928 East Gypsy Lane Road
P.O. Box 679 • Bowling Green, Ohio 43402

Contact	Social Services Supervisor Designated Representative: Ask for specific service & caller will be directed to the correct worker
Web Site	www.woodcountyjfs.com
Contact Phone Number	419-352-7566 or 1-888-282-1118
Program Focus	Child care for parents who are employed or in job training or schooling • Emergency Assistance: car repair, utility shut-off, gasoline, rent/deposit, etc. <ul style="list-style-type: none"> • Adult Protective Services and Adult Services • Transportation: for health/ behavioral health care • Intensive Case Management: to promote self sufficiency
Eligibility	Various documents required
Schedule	Monday, Wednesday, Thursday and Friday 8:00 a.m. - 4:30 p.m. Tuesday 8:00 a.m. - 6:00 p.m.
Fees	None
Building Access	Barrier free
Other Related Programs	To report a concern about a licensed child care center, or to receive compliance information, call Ohio Department of Job & Family Services at 419-246-2830
Other Services	Certify Type B Home Child Care Providers

WOOD CO. DEPT. OF JOB & FAMILY SERVICES – Temporary Assistance

1928 East Gypsy Lane Road
P.O. Box 679 • Bowling Green, Ohio 43402

Contact	Eligibility Referral Administrator Social Services Administrator
Web Site	www.woodcountyjfs.com
Contact Phone Number	419-352-7566 or 1-888-282-1118
Program Focus	To provide families with the services and support needed to obtain and maintain self-sufficiency
Eligibility	Program Specific Federal Income Guidelines Custody of Minor Children "PRC"
Schedule	Monday, Wednesday, Thursday and Friday 8:00 a.m. - 4:30 p.m. Tuesday 8:00 a.m. - 6:00 p.m.
Fees	None
Building Access	Barrier free
Other Related Programs	OWF (cash for families) - Food Stamps Health Check/Medicaid - Medical coverage for children and adults CHIP - Children's Health Insurance Program Childcare Assistance Emergency Assistance

W. C. EDUCATIONAL SERVICE CENTER - Home Based

Home-Based/Itinerant Services for Children With Special Needs
1867 N. Research Drive • Bowling Green, Ohio 43402

Contact	Supervisor or Designated Representative Alternate Representative
Web Site	www.wood.k12.oh.us
Contact Phone Number	419-354-9010
Program Focus	Home-based, or other least restrictive environment, program for children with special needs Work with child and family or other educators/caretakers on agreed upon goals and objectives documented in an Individualized Educational Plan (IEP) Assist in contacting appropriate referral agencies and coordinate information with physicians, other specialists, nursery/preschools, and ultimately the child's home school
Eligibility	3 to 5 years of age with delays designated by the State of Ohio in areas of: speech/language, hearing, vision, orthopedic involvement, health function, behavior/emotional, or overall development
Schedule	Monday through Friday 8:30 a.m. - 4:30 p.m. One contact hour per week
Fees	None
Building Access	Barrier free

W. C. EDUCATIONAL SERVICE CENTER - Preschool

Wood County Educational Service Center (Preschool Special Needs)
1867 N. Research Drive • Bowling Green, OH 43402

Contact	Supervisor or Preschool Psychologist
Web Site	www.wood.k12.oh.us
Contact Phone Number	419-354-9010
Program Focus	Provision of developmentally appropriate preschool programming for children with special needs and children with typical development
Eligibility	3 years of age Identified as having significant developmental delays Typical development for peer models
Schedule	Monday through Thursday Time varies according to school district
Transportation	Provided by home school district
Fees	No cost for children with special needs Sliding tuition scale for typically developing children
Building Access	Varies with preschool location
Other Services	Home-Based (Itinerant) Service; Physical Therapy; Adaptive Physical Education; Speech & Language Services; Occupational Therapy; Psychological Services

WOOD COUNTY HEALTH DEPARTMENT - Child Health Clinic

1840 East Gypsy Lane
Bowling Green, Ohio 43402

Contact	Assistant Director of Nursing
Web Site	www.co.wood.oh.us/healthdepartment/
Contact Phone Number	419-352-8402, 419-354-9049 Northern Wood County – 1-866-861-9338
Program Focus	CHILD HEALTH CLINIC Pediatrician Health maintenance physicals Ambulatory care treatment
Eligibility	Birth to 21st birthday
Schedule	Business hours of Wood County Health Department Evening appointments available Satellite Clinics in Northwood, North Baltimore, Bradner and Perrysburg Appointments requested
Fees	Fees vary with services provided Sliding fee scale according to income; Medicaid accepted
Building Access	Barrier free
Other Related Programs	Immunization Clinic; Infant Care; Well Child Assessment Clinic; Women, Infants and Children (WIC); Coordination of Services for Children with Medical Handicaps; Help Me Grow
Other Services	Prenatal Clinic, Adult Clinic, Family Planning

WOOD COUNTY HEALTH DEPARTMENT - Immunization

1840 East Gypsy Lane
Bowling Green, Ohio 43402

Contact	Assistant Director of Nursing
Web Site	www.co.wood.oh.us/healthdepartment/
Contact Phone Number	419-354-5556 – Northern Wood County 1-866-861-9338
Program Focus	Immunization Clinic
Eligibility	Infants, preschool children and adults, Wood County residents, travelers
Schedule	Business hours of Wood County Health Department Evening appointments available Satellite Clinics in Northwood, North Baltimore, Bradner and Perrysburg Appointments requested
Fees	Childhood immunization - No child denied required immunization based on inability to pay Medicaid accepted Adult immunization fees vary
Building Access	Barrier free
Other Related Programs	Child Health Clinic; Infant Care; Well Child Assessment Clinic; (WIC); Coordination of Services for Children with Medical Handicaps; Help Me Grow
Other Services	Prenatal Clinic, Adult Clinic, Family Planning

WOOD COUNTY HEALTH DEPARTMENT - WIC

1840 East Gypsy Lane
Bowling Green, Ohio 43402

Contact	WIC Director
Web Site	www.co.wood.oh.us/healthdepartment/
Contact Phone Number	419-354-9661 Northern Wood County 1-866-861-9338
Program Focus	WOMEN, INFANTS, AND CHILDREN (WIC) Supplemental food and nutrition program for children five years of age and under and “at risk” low income pregnant, postpartum and breast-feeding women
Eligibility	Birth to 5 years of age Women must be pregnant, breastfeeding, or postpartum
Schedule	Business hours of Wood County Health Department Evening appointments available Satellite Clinics in Northwood, North Baltimore, Bradner & Perrysburg Appointments requested
Fees	None
Building Access	Barrier free
Other Related Programs	Child Health Clinic; Immunization Clinic; Infant Care; Well Child Assessment Clinic; and Coordination of Services for Children with Medical Handicaps; Help Me Grow
Other Services	Prenatal Clinic, Adult Clinics, Family Planning

WOOD COUNTY HOSPITAL – Rehabilitation Services

950 W. Wooster St.
Bowling Green, Ohio 43402

Contact Office Staff

Web Site www.woodcountyhospital.org

Contact Phone Number 419-354-8950

Program Focus Providing comprehensive outpatient Physical Therapy,
Occupational Therapy and Speech Therapy

Eligibility Services for all ages

Schedule Monday through Friday
8:00 a.m. - 6:00 p.m.

Fees Insurance

Building Access Barrier free

Other Services See Wood County Hospital's web site

WOOD COUNTY HOSPITAL – The Center for Child Development

950 W. Wooster St.
Bowling Green, Ohio 43402

Medical Director..... Sherri Thomas MD, Developmental-Behavioral Pediatrician
1037 Conneaut Ave., Suite 203, Bowling Green, OH 43402

Contact..... clinic nurse or clinic receptionist

Web Site..... www.woodcountyhospital.org

Contact Phone Number..... 419-354-3295

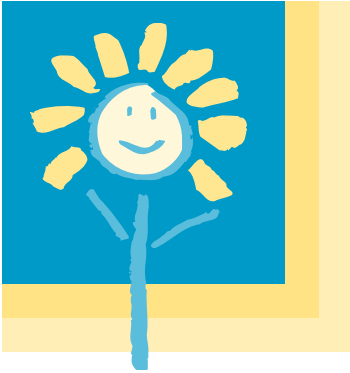
Program Focus..... Provides services to children with developmental disorders and associated behavioral health concerns. Offers comprehensive, multi-disciplinary diagnostic evaluations and ongoing medical management.

Eligibility..... Birth – 21 years of age

Schedule..... Monday through Friday
8:00 a.m. - 4:30 p.m.

Fees..... Commercial Insurance, Medicaid, Bureau for Children with Medical Handicaps (BCMH), self-pay

Building Access..... Located on the campus of Wood County Hospital in the Rehabilitation Building. Office is handicap accessible.



No Wrong Door makes getting help easier. We're a partnership of Wood County human and social service agencies, schools, law enforcement agencies, government and the courts, dedicated to assisting Wood County residents in need.

Just call any of the No Wrong Door agencies listed here and they will help you find your way to the help you need.

24 HOUR Information & Referral – United Way 2-1-1	Dial 2-1-1
24 HOUR CRISIS LINE – The Link of Behavioral Connections 419-352-1545 or 800-472-9411	
American Red Cross	419-352-4575
Behavioral Connections of Wood County.....	419-352-5387 or 419-872-2419
Bowling Green City Schools.....	419-352-3576
Children’s Resource Center	419-352-7588 or 1-888-466-KIDS
City of Bowling Green	419-354-6203
Family Service Counseling Center of Wood County.....	419-352-4624 or 1-877-352-4624
OSU Extension Service	419-354-9050
Path Stones	419-875-6654
United Way in Wood County	419-352-2390
Wood County Alcohol, Drug Addiction & Mental Health Services Board	419-352-8475
Wood County Board of Developmental Disabilities.....	419-352-5115
Wood County Commissioners	419-354-9100 or 419-243-4223
Wood County Committee on Aging.....	419-353-5661
Wood County Department of Job and Family Services	419-352-7566
Wood County Educational Service Center	419-354-9010
Wood County Health Department.....	419-352-8402 or 419-244-1610
Wood County Hospital	419-354-8910 (ER) or 419-354-8900
Wood County Juvenile Court	419-352-3554 or 419-243-4223
Wood County Prosecutor	419-354-9250
WSOS Community Action Commission	419-353-7407



Helping our children
grow and develop
to their
fullest potential



Wood County agencies helping children find the right services to meet their needs. We put parents in touch with the Wood County agencies best able to meet the health, social, and educational needs of their children.

419-352-8402 Help Me Grow Information Line

866-861-9338 (Toll Free)